

Saint Andrew's Lutheran Church

# 2023 Annual Report

Growing Together in Christ to Love and Serve All People



Saint Andrew's Lutheran Church



2650 148th Avenue SE  
Bellevue, WA 98007  
425-746-2529  
[www.SALC.church](http://www.SALC.church)  
[info@SALC.church](mailto:info@SALC.church)

# Contents

Annual Meeting of the Congregation Agenda . . . . .	1
Mission and Values . . . . .	2
2023 Congregation Council . . . . .	2
2023 Annual Meeting of the Congregation. . . . .	3
2203 Semi-Annual Meeting of the Congregation . . . . .	6
2023 Pastoral Acts . . . . .	9
Pastor Homer W. Berner Scholarship Fund Recipients . . . . .	10
2023 Statistical Report . . . . .	11
Quiet Servants . . . . .	12
Report of Congregation Council, Carolynn Ferris . . . . .	14

## Saint Andrew's Ministries Reports

Lead Pastor, The Reverend Lara Forbes . . . . .	16
Shared-Time Pastor, The Reverend Timothy T. Weber . . . . .	17
Discipleship Ministries	
Director of Youth and Family Ministries, Doug Johnson . . . . .	19
Discipleship Ministries Committee . . . . .	22
Fellowship . . . . .	25
Fellowship Coordinator, Sherry Grindeland	
Worship and Liturgical Arts	
Director of Music Ministries, Dr. Will Simpson . . . . .	30
Worship and Liturgical Arts Committee . . . . .	32
Building and Property Committee. . . . .	33
Communications Committee . . . . .	35
Health and Wholeness Ministry Committee. . . . .	35
Human Resources Committee . . . . .	38
Outreach and Servant Ministries Committee . . . . .	38
Stewardship Committee . . . . .	47
Ministry Groups	
Acolyte Order of St. John . . . . .	48
Altar Guild. . . . .	49
Dorcas Circle . . . . .	50
Housing Task Force . . . . .	51
JEDI Group (formerly Racial Justice Group) . . . . .	53
Reception Support Team . . . . .	54
Men's Ministry/Tuesday Morning Men . . . . .	55

## Related Ministries Reports

Imagine Housing . . . . .	56
Pastoral Counseling, Dr. Neal Teng. . . . .	57

## Financial Reports

Finance Committee . . . . .	60
Balance Sheets . . . . .	61
Statement of Income and Expenses. . . . .	62
2024 Proposed Current Fund Budget - Mission Partners . . . . .	63
2024 Proposed Current Fund Budget. . . . .	64
Annual Statistics . . . . .	66

# Annual Meeting of the Congregation January 28, 2024 Agenda

1. Call to Order, Opening Prayer, Land Acknowledgement and Establishment of Quorum.
2. Approval of January 29, 2023 Annual Meeting and June 4, 2023 Semi-Annual Meeting Minutes
3. 2024 Nominating Committee Report
4. 2024 Council Member Election
5. 2025 Nominating Committee Approval Vote
6. Briefing on Affordable Housing Project and Vote on Resolution
7. Results of Council Member and Nominating Committee Votes
8. 2023 Finance Report
9. Proposed 2024 Annual Budget Motion and Vote
10. Results of Affordable Housing Resolution Vote
11. Quiet Servants Recognition
12. Results of Vote on Proposed 2024 Annual Budget
13. Growing Young Assessment
14. Quilt Raffle
15. Closing Prayer
16. Adjournment
17. Close with Singing of the Doxology

## Respectful Communication Guidelines

- R** – Take **RESPONSIBILITY** for what we say and feel without blaming Others
- E** – **EMPATHETIC** listening
- S** – Be **SENSITIVE** to differences in communication styles
- P** – **PONDER** what we hear and feel before we speak
- E** – **EXAMINE** our own assumptions and perceptions
- C** – keep **CONFIDENTIAL** when it is requested
- T** – **TRUST** the Spirit's presence in the midst of ambiguity

# Mission Statement

Growing Together in Christ to Love and Serve All People

## Values

### Worship

Responding to God's gift of Grace through Word and Sacrament, with praise, prayer and music.  
Ephesians 5:18b-20, Romans 12:1

### Discipleship

Nurturing the growth of Christian faith in all ages as we learn from and follow Jesus.  
Colossians 1:10, 2 Timothy 3:14-17

### Outreach

Serving and loving our neighbors with generosity and justice by sharing of our gifts from God.  
Mark 10:43-45, Matthew 25:35-40

### Relationship

Living as a compassionate community sharing God's forgiveness and acceptance of all.  
John 13:34-35, Colossians 3:12-14

## 2023 Congregation Council

### Officers

President ..... Carolynn Ferris.....2025  
Vice President..... Dan Johnson .....2024  
Secretary ..... Tom Getzinger.....2024  
Treasurer ..... Bill Brueggemann.....2026  
Lead Pastor ..... Lara Forbes

### Members

Kit Bowerman..... 2026  
Aaron Davis..... 2025  
Rob Parks..... 2025  
Rebecca Piel ..... 2025  
Ann Ross-Clarke .... 2026  
Dick Szabo..... 2024  
Jean Wahlstrom..... 2024  
Juliet Zhang ..... 2026  
Youth Representative - none

### Note:

Term expires in January of the year given

# 2023 Annual Meeting of the Congregation

## Annual Congregation Meeting Saint Andrew's Lutheran Church

Meeting Minutes

January 29, 2023

**Call to Order:** The meeting was called to order at 11:20am

**Opening Prayer:** Led by Pastor Lara

**Quorum:** 53 individuals are needed. 111 attendees

### Business

#### 1. Land Acknowledgement Presented

#### 2. Election of 2023 Congregation Council members.

- a. Art Gurtel shared the 2023 Nominating Committee Reports
  - i. The committee was activated in October 2022 to help select the candidates for the adult positions vacant for the Annual Meeting.
  - ii. Thanks and acknowledgement presented for the Committee Members:
    1. Todd Carmichael, Melinda Elien, Art Gurtel, Dick Swaisgood, and Vanessa Wilkie
  - iii. The 2023 Nominating Committee recommended the vote for the 2024 Council Candidates:
    1. Kit Bowerman, Bill Brueggemann, Ann Ross-Clarke, Margaret Santjer, Carol Schneider, and Juliet Zhang.
    2. Art explained how these candidates represent the number needed per our Constitution.
- b. Carolynn also recognized Art Gurtel for his support and his ingenuity to color code the vote.
- c. **Election of 2024 Nominating Committee.**
  - i. 2023 Nominating Committee also recommends the approval of the below nominating committee members:
    1. Matt Camrud, Karin Eklof, Joyce Kasper, Kari Henderson, and Lois Nelson

#### 3. Quiet Servants recognition shared by Pastor Lara

- a. Dana Nasby
- b. Karin Eklof
- c. Janell Erickson
- d. Stella Nieman
- e. Lowell Arneson
- f. Art Gurtel
- g. Linda Powell
- h. Adam Schoen
- i. Johannes Grad
- j. Hillary Nordwell
- k. Melanie Grad

*continued on page 4*



#### 4. Finance Committee Report and Approval of 2023 Budget

- a. Report presented by Brady Kasper
  - i. Brady shared his recognition of Bill Brueggemann, Russ Stark, Joni Barrott, Counters, Jan Bowerman
  - ii. 2022 Financial Summary was shared
    1. A graph was shared that presented cash flow (income minus expenses) compared to the average throughout the past few years. The first 7 months were more negative than in the past, but the congregation responded with increased giving in the last 5 months and we ended with more income than expenses, a positive cash flow of about \$4,000.
    2. Brady did note that the Payroll Protection Reserves were also used in the current fund and counted as income for this year. Regular giving was about \$776,000, which is on par with the past couple of years.
  - iii. **2023 Budget Summary**
    1. To establish income, Brady shared how the finance committee examines income and established \$800,000. The Executive Committee and Council would like to create a balanced budget for the year.
    2. The Executive Committee and Council has approved a budget of \$800,000 as presented by Brady Kasper
    3. Carolyn also clarified that the \$800,000 does share a stretch goal still
      - a. Impacts for staff
        - i. Sherry 20hrs a week
        - ii. Mary 20hrs a week
      - b. Modifying office hours
        - i. 9am-3pm Mon-Thursday
        - ii. Mary will be in the office on Mondays and Tuesdays
    - iv. Motion moved by John Arnold; and 2nd by Tom Benson
    - v. The floor was opened for questions
      1. Brady clarified that the salary adjustment also requests the lack of an accountant
      2. It was shared that healthcare would be adjusted for those personnel whose hours are cut
      3. Reserve funds \$114,000
      4. Bill Brueggemann shared information about the results of the comparative analysis of staff salaries
      5. Open floor discussion was closed at 12:14pm
5. Results are in!
  - a. 2023 Council: Kit Bowerman, Bill Brueggemann, Ann Ross-Clarke, Juliet Zhang were elected.
  - b. 2024 Nominating Committee was unanimously approved
    - i. Approve: 110
    - ii. Disapprove: 0
    - iii. Abstain: 0

continued on page 5

continued from page 4

**6. Quilt Raffle:**

- a. Dorcas Circle has donated a quilt to be raffled with proceeds going to Lutheran World Relief.
- b. Winner! Dick Swaisgood

**7. Vote on Resolution authorizing Executive Committee to negotiate a lease with Emerald Heights Academy**

- a. The potential lease of our site was shared
    - i. Catholic school serving youth K-8
    - ii. They need to find a new space by Fall 2023
    - iii. Changes needed for our facility include additional fire doors and voice alarm system
    - iv. Possible lease agreements include:
      - 1. 12 classrooms
      - 2. Parking spaces
      - 3. Fellowship hall
      - 4. Kitchen
  - b. The location is looking at another site that requires less capital improvements.
  - c. Should EHA show renewed interest in our site, the Executive Committee has requested that we approve the proposed resolution presented at the January 29, 2023 Annual Meeting to have the Saint Andrew's Executive Committee negotiate a lease with EHA should their leadership choose to pursue a lease with Saint Andrew's.
    - i. Motion moved by Tom Getzinger, and 2nd Mikel Oswald
    - ii. Questions were opened:
      - 1. The fact that we are a RIC congregation was shared with EHA
      - 2. The Executive Committee did share that they are looking at tax and liabilities
      - 3. Signage will be permitted by the parking lot, not on 148th.
    - iii. Discussion was closed at 12:28pm
    - iv. Resolution to authorize Executive Committee to negotiate a lease with EHA passed
      - 1. Approve: 102
      - 2. Disapprove: 5
      - 3. Abstain: 4
8. The budget passed.
- a. Approve: 102
  - b. Disapprove: 9
  - c. Abstain: 5
9. Day of Service Information
- a. Pastor Lara and Doug Johnson shared more information about the Day of Service to partner with Sammamish Hills Lutheran Church
    - i. May 6, 2023
    - ii. A call to attend was presented.

continued on page 6

continued from page 5

10. Summer Programming for Youth
  - a. California trip to Western States Gathering
    - i. California Lutheran University
    - ii. Doug did share more about our youth group activities on Sundays, in the evenings, and monthly trips and invited folks to learn how to connect.
  - b. Faith and Family Resource Center update
    - i. The renovation is still in progress. Preparation is still underway and is waiting for Kurt's guidance after our church database transitions.
    - ii. Grace Grant was made possible by Grace Lutheran Church and the sale of their property. Thank you for all of those who have participated in this process!
11. Thanks to Rob Parks, Mary Davis, Aaron Davis, David Mills, Kendra Mills, Susan Hegedus for helping make this hybrid meeting possible.

**Meeting Adjournment occurred at 12:40pm**

Dr. Will led singing of the Doxology.

## 2023 Semi-Annual Meeting of the Congregation

### Semi-Annual Congregation Meeting Saint Andrew's Lutheran Church

Meeting Minutes June 4, 2023

**Call to Order:** The Semi-Annual Congregational Meeting was called to order.

**Faith Sharing / Opening Prayer:** Pastor Lara led with an opening prayer.

**Land Acknowledgement:**Carolynn Ferris shared a Land Acknowledgement statement.

**Business:**

1. Financial Update
  - a. Bill Brueggemann provided an update on the finances of the church.
  - b. Bill shared three charts related to our \$800K budget.
    - i. Income by month.
      1. January was very high. February was a little low. March and April were about as expected.
      2. April, which is usually high thanks to Easter, was lower than expected.
    - ii. Expenses by month.
      1. Jan, Feb, Mar, and May were close to expectations.
      2. April expenses were lower than expected.
      3. To date, we are \$18K underspent to budget.
    - iii. Cash Flow
      1. Cash flow is negative (by \$11K) but better than the 5-year average.
    - iv. Cash Flow chart is available each month in the Voice.
  - c. Someone asked why we don't pass offering plates anymore.
    - i. Stopped due to COVID. Tried restarting about a year ago but with low attendance, passing was challenging. Most everyone has gotten used to the plates being available on the way to the sanctuary. But this could be reevaluated.
    - ii. Bill noted many people give automatically from their banks. *continued on page 7*



*continued from page 6*

- d. Someone asked for a pie chart in the next Voice showing source of giving to better understand the importance of the plates.
2. WLA Sanctuary Refresh
  - a. Sharon Gurtel provided an update on the WLA (Worship and Liturgical Arts) Sanctuary Refresh project.
  - b. Project started in 2018, paused due to COVID.
  - c. WLA received designated funds for this project (~\$7.8K). Overview approved by 2018-2019 council.
  - d. Vision is for a more contemporary look and feel, extending outdoor elements we see through sanctuary windows, lighten overall color palette.
  - e. Met with many local artists. Selected Warren Weber from Bothell.
  - f. Initial pieces to update:
    - i. Lectern: replace temporary classroom lectern. More appropriate size for space. Lighter colors. Alpha/Omega design
    - ii. Baptismal Font: curved wood (like flowing water). Lighter colors.
    - iii. Christ Candle: Similar in design to Baptismal font.
  - g. WLA will provide updates as received by the artist.
  - h. Questions/comments
    - i. Octagon represents the blessings of God. What is the message here?
      1. There will still be some octagons. The updates will bring in new elements. E.g., rushing waters for baptism.
    - ii. Has congregation had a chance to review and approve the designs?
      1. WLA is reviewing designs and appreciates input.
    - iii. Feedback: Make sure lectern works for people of different heights.
    - iv. Questions regarding funding.
      1. There is a unified budget and we encourage giving to the general fund. But we have ~\$150K of various designated funds.
      2. This will come from funds specifically designated for this purpose.
    - v. Baptismal font was built by one of our founding members.
      1. Some pieces have issues (e.g., wear) and something needs to be done.
    - vi. Fixed rail and altar make alternate use of space difficult.
      1. WLA is aware of this. It is on the list, but funding could be an issue.
    - vii. Can existing bowls etc. be incorporated in new pieces?
      1. One bowl was donated in honor of Ed Short.
      2. WLA is aware of this and thinking about it.
      3. Sharon said she would ask the artist about this.
    - viii. Feedback – traditions are good. Pieces were built by our members and have meaning to many. Not impressed by new designs
    - ix. Feedback – Excitement about change, inspiration of proposed designs.
    - x. Can the artist come in September and update congregation on his vision/progress?
3. Stewardship Committee
  - a. Kit Bowerman spoke about Stewardship and the Stewardship Committee.
  - b. Kit read from Paul's letter to Corinthians.
  - c. Kit expressed that the Stewardship Committee needs to be more active.

*continued on page 8*

continued from page 7

- d. Kit agreed to chair the committee, gearing up in September.
  - e. Kit is looking for volunteers to work with him.
4. Affordable Housing
- a. Hal Ferris provided information about upcoming Affordable Housing opportunities.
  - b. Bellevue City Council about to approve code changes allowing churches to build affordable housing on excess land.
  - c. SALC could have up to 200 units without affecting church, using part of the parking lot and unused land east of that (about 2 of our 4.5 acres).
  - d. We would likely still own land but would be compensated. We wouldn't be responsible for building.
  - e. Just informational for now – no money being spent. Will update congregation ongoing.
  - f. Question: how many units? What about parking?
    - i. 100-120 units. Need to figure out parking needs as part of plan. Would likely have "tuck under" parking.
  - g. Many comments about how exciting this opportunity is.
  - h. Question: Timeframe?
    - i. Rezone this fall. If we move forward, this is a multi-year process.
5. Cluster Collaboration
- a. Carolynn Ferris provided an update on collaboration occurring within our cluster.
  - b. Decreased membership, youth/families, giving.
  - c. Instead consider our abundance. We have many assets. What can we do with them?
  - d. The NW ELCA Cluster: SALC, Cross of Christ, St. Luke's, Holy Cross, Mt. Si, Samm. Hills.
  - e. April 29<sup>th</sup>: There was a cluster collaboration brainstorming session.
    - i. Pastoral duties, Worship/Music, Buildings/Property, Youth/Family ministries, Outreach, Small groups
    - ii. Resulted in dozens of collaboration ideas
  - f. Cross of Christ is close to us. They feel they need to make a change within five years.
    - i. Maybe more collaboration. Maybe merger? But SALC isn't there yet.
    - ii. Exec Committees will meet and discuss further.
  - g. Herb Shao from Synod had requested funding for consultant to help w/ future collaboration.
  - h. Feedback from another attendee: good to hear we aren't alone with concerns. Biggest fear: doing nothing.
  - i. Feedback: hearing about assets at other churches showed how blessed we are at SALC.
  - j. Feedback: Don't see Issaquah church.
    - i. They've been invited but chose not to participate.
  - k. Question: will the Synod consultant have experience with mergers?
  - l. Feedback: Been involved with the preschool at Cross of Christ. Cross of Christ is a good group of people.
6. Thanks to Susan Hegedus (for running Zoom), Kurt Lutterman (for tech support), Kit Bowerman (for mic running), Cheryl Jurrus (for managing the camera), and Sherry Grindeland (for organizing snacks).
7. Closing Blessing presented by Pastor Lara.

The meeting ended with singing of the doxology, led by Sharon Gurtel.

# 2023 Pastoral Acts

## Baptisms

Giulianna Ruth Grumstrup  
Kayce James Bateman

## Affirmations of Baptism

Joshua Santjer  
Zoe Elien

## Weddings

none

## Memorials

Ann Shaw  
Ruth Chavers (Pastors Lara Forbes and James McEachran)  
David Grindeland (Pastors Lara Forbes and James McEachran)  
Claire Ellen Charlebois  
Raymond Stanley Sivesind  
Ernest Lowell Arneson  
Mark Richard Nieman  
Natasha Joy Nieman  
Richard Dean Swaisgood  
Larry E. Berglind  
Nancy P. Davis

## Committals

Ann Shaw	Tahoma National Cemetery
Ron Muecke	Saint Andrew's Memorial Garden *
David Grindeland	Saint Andrew's Memorial Garden *
Paul Hoglund	Saint Andrew's Memorial Garden *
Valerie Vesta Hoglund	Saint Andrew's Memorial Garden *
Karen Hoglund Burt	Saint Andrew's Memorial Garden *
Beverley Kaye Lenci	Saint Andrew's Memorial Garden
Gwen D. Kossman	Saint Andrew's Memorial Garden
Richard Dean Swaisgood	Saint Andrew's Memorial Garden
Larry E. Berglind	Saint Andrew's Memorial Garden

\* (Pastors Lara Forbes and James McEachran)



# Pastor Homer W. Berner Scholarship Fund Recipients

## 2002

Clare Hillard . . . . . CLU  
 Matthew Nienow . . St. Olaf  
 Matthew Johnson. . . . .PLU

## 2003

Clare Hillard . . . . . CLU  
 Matthew Nienow . . St. Olaf

## 2004

Kari Gurtel . . . . . .PLU  
 Craig Kipper . . . . . .PLU  
 Matthew Johnson. . . . .PLU  
 Sarah Johnson . . . . . .PLU  
 Alyssa McEachran . . . . Witt  
 Matthew Nienow . . St. Olaf  
 Courtney Stringer. . . . .PLU

## 2005

Kari Gurtel . . . . . .PLU  
 Craig Kipper . . . . . .PLU  
 Matthew Johnson. . . . .PLU  
 Alyssa McEachran . . . . Witt  
 Allison Parks . . . . . .PLU  
 Courtney Stringer. . . . .PLU  
 Jonathan Weber. Concordia

## 2006

Aaron Davis. . . . . .PLU  
 Kari Gurtel . . . . . .PLU  
 Mary Johnson . . . . . .PLU  
 Matthew Johnson. . . . .PLU  
 Sarah Johnson . . . . . .PLU  
 Craig J. Kipper . . . . . .PLU  
 Alyssa McEachran . . . . Witt  
 Allison Parks . . . . . .PLU  
 Courtney Stringer. . . . .PLU

## 2007

Aaron Davis. . . . . .PLU  
 Kari Gurtel . . . . . .PLU  
 Mary Johnson . . . . . .PLU  
 Sarah Johnson . . . . . .PLU  
 Alyssa McEachran . . . . Witt  
 Allison Parks . . . . . .PLU  
 Courtney Stringer. . . . .PLU

## 2008

Aaron Davis. . . . . .PLU  
 Kevin Davis . . . . . .PLU  
 Mary Johnson . . . . . .PLU  
 Sarah Johnson . . . . . .PLU  
 Allison Parks . . . . . .PLU

## 2009

Aaron Davis. . . . . .PLU  
 Kevin Davis . . . . . .PLU  
 Mary Johnson . . . . . .PLU

## 2010

Kevin Davis . . . . . .PLU  
 Mary Johnson . . . . . .PLU

## 2011

Kevin Davis . . . . . .PLU  
 Sarah Getzinger . . . . . CLU

## 2012

Kevin Davis . . . . . .PLU  
 Sarah Getzinger . . . . . CLU  
 Jon Thorpe . . . . . Gonzaga

## 2013

Kevin Davis . . . . . .PLU  
 Sarah Getzinger . . . . . CLU  
 Rebecca Johnson . . . . .PLU  
 Jon Thorpe . . . . . Gonzaga

## 2014

Rebecca Johnson . . . . .PLU  
 Jon Thorpe . . . . . Gonzaga

## 2015

Rebecca Johnson . . . . .PLU  
 Jon Thorpe . . . . . Gonzaga

## 2016

Rebecca Johnson . . . . .PLU  
 Haley Mills . . . . . CLU

## 2017 and 2018

None

## 2019

Emily Andresen . . Gonzaga

## 2020

Emily Andresen . . Gonzaga

## 2021

Emily Andresen . . Gonzaga

## 2022

Emily Andresen . . Gonzaga  
 Seeley Lester . . . . Gonzaga

## 2023

Seeley Lester . . . . Gonzaga

CLU: California Lutheran University  
 PLU: Pacific Lutheran University  
 Witt: Wittenberg

This fund was established honoring the life and ministries of Pastor Homer W. Berner. He served as pastor of our congregation from February 3, 1963 until his first retirement on June 30, 1974. His chief joy in life, aside from God and his family, was his love in establishing new congregations. On "leaving" Saint Andrew's, he served another ten years as Chaplain at Overlake Hospital and as Pastor Emeritus. In 2001, the fund was established with monies he had been given since his retirement as a housing stipend. At his death, the charitable remains of his estate ensured that generations of students would remember his commitment to the life of the Church.

Applicants need to annually request scholarship funding. To receive funding, a student must be admitted to a "Christian" affiliated college/university; be an "active" member of Saint Andrew's; and be an undergraduate student or a beginning undergraduate student in good academic standing at the school. The basic scholarship amount is \$500, with a maximum eligibility of four years. In most instances, these funds are matched dollar for dollar by the schools. The Executive Committee selects scholarship recipients.

# Statistical Report

## Children

## Adults

### Members

<u>Received</u>	<u>2019</u>	<u>2020</u>	<u>2021</u>	<u>2022</u>	<u>2023</u>	<u>2019</u>	<u>2020</u>	<u>2021</u>	<u>2022</u>	<u>2023</u>
Baptisms	7	4	2	7	<b>2</b>	1	0	0	0	<b>0</b>
Confirmations/ Affirmations of Faith	11	6	9	2	<b>2</b>	0	0	0	3	<b>3</b>
Transfers	5		1	0	<b>0</b>	21			4	<b>8</b>
<b>Total Received</b>	<b>23</b>	<b>10</b>	<b>12</b>	<b>9</b>	<b>4</b>	<b>22</b>	<b>0</b>	<b>0</b>	<b>7</b>	<b>8</b>

### Members

<u>Removed</u>	<u>2019</u>	<u>2020</u>	<u>2021</u>	<u>2022</u>	<u>2023</u>	<u>2019</u>	<u>2020</u>	<u>2021</u>	<u>2022</u>	<u>2023</u>
Transfers	0	5	12	0	<b>0</b>	13	9	12	9	<b>2</b>
Death	0	0	0	0	<b>0</b>	14	17	8	10	<b>15</b>
<b>Total Removed</b>	<b>0</b>	<b>5</b>	<b>12</b>	<b>0</b>	<b>0</b>	<b>27</b>	<b>26</b>	<b>20</b>	<b>19</b>	<b>17</b>

### Summary of Membership

	<u>2019</u>	<u>2020</u>	<u>2021</u>	<u>2022</u>	<u>2023</u>
Baptized Members	658	632	600	590	<b>582</b>
Confirmed Members	572	551	535	525	<b>519</b>



Assembling Personal Care Kits



Dedication of Faith and Family Center



# Quiet Servants

In the fall of 1998 Dave Marcrander, as President of the Congregation Council, suggested we establish a recognition time for those of the congregation and community whose names are brought forward as just that--"quiet" servants--who have found paths of service for which they might not ever get recognition from within the community of Saint Andrew's.

† Serving in Eternal Life

♥ Non-member

## January 1999

† Bud Barningham  
† Judy Dumler  
† Margaret Heilman  
† Bob Koenig  
† John Lindsay  
† Ray Pates

## June 1999

Belquiza Hammond  
† Lois Lindsay  
† Jim Mickelson  
Sue Short  
Dick Szabo  
Steven Thorpe

## January 2000

John Goesling  
Catherine Hillard  
Dean Hobson  
† Dave Kolden  
Nona Gram  
Sarah Shaw Newsum  
Vivian Sawhill

## June 2000

Rob Parks  
Craig Swenson  
Chris Takayama  
Chris Takayama

## January 2001

Michele Vossler  
Cheryl Kimball  
Colleen Myers  
Yindi Boettcher  
♥ Brad Kirschner

## June 2001

Dick Thiel  
† Don Korsch  
Jeff Hilburn

## January 2002

† Cal Bressler  
† Maxine Giard  
† Doris Rea  
Susan Evans

## June 2002

† Sam Riddlesberger  
† Ed Short

## January 2003

Kurt Lutterman

## June 2003

Kathy Benson  
Phil Maakestad

## January 2004

Andrew Face  
Susan Trudell Face  
Darlene Weatherly

## June 2004

Joel Tollefson  
Carrie Tollefson  
Carol Muecke  
† Ben Bretheim

## January 2005

Andy Anderson  
† Jim Crane  
Ken Kossman  
† Glenn Pomerenk  
Ralph Risdal  
† Marge White  
Ann Thorpe  
Donna Schroeter  
Jan Bowerman

## June 2005

Jen Casey  
Marie Bean  
Susan Hegedus  
Lucy Sannes

## January 2006

Dianne Chong  
Larry Abner  
David Squiers  
Kay Walker

## June 2006

Minda Brusse  
† George Lundstrom  
† Lucille Lundstrom  
Lou Tollefson

## January 2007

Vickie Kirn  
† Inge Siemens  
† George Miller  
Judi Miller  
Jim Long  
Kathy Long  
Daniel Long

## June 2007

Guy Feldman

## January 2008

Nancy Davis  
Carol Wissner  
Joanne Hinkle  
† Yvonne Heuving  
Sigrid Viswanathan

## January 2009

Don Brt  
Dottie Clingan  
† Paul Hogle  
† Vesta Hogle  
† Jan Jeide  
Kendra Mills  
† Barbara Nieman  
† Louise Oda  
† Dudley Phibbs  
† Sandy Pratt  
Judy Thiel  
♥ Kerry Yates

*continued on page 13*

# Quiet Servants (continued)

## June 2009

† Nayna McLennan  
Lois Nelson  
† Marge White

## January 2010

Judy Gowdy  
Teresa Lutterman  
† Lois Korsch  
Darcy Johnson  
Shirley Hobson  
Dave Marcrander

## June 2010

Susie Carney  
Linda Gilham

## January 2011

Stella Nieman  
Linda Willenberg  
John Nelson  
Joyce Nelson  
Vince Visaya  
Doris Visaya  
Cheryl Jurrus

## January 2012

Zoë Henderson  
Jon Thorpe  
Christie Andresen  
Marielle Face  
Dave Robitaille  
† John Gowdy  
† Ruth Clabaugh

## June 2012

Joan Tweten  
Jack Boller  
Shelly Abner  
Dana Nasby  
Dave Marcrander

## January 2013

Donna Smith  
Blenda Huebner  
Sharon Gurtel  
Jill Nichols-Hicks

## June 2013

Dick Szabo  
Debbie Szabo  
Judy Thiel

## January 2014

† Sue Aho  
Joyce Arnold  
Sue Bradley  
Sarah Cannon  
Blenda Huebner  
Karen Laub  
Ruth Miller  
† Dick Swaisgood  
Debbie Szabo  
Michele Vossler

## January 2015

Peter Jasinski  
Clare Moe  
† John Stoddard  
Rick West

## June 2015

Todd Carmichael

## January 2016

Aaron Davis  
Mary Davis  
John Nelson  
Joyce Nelson  
Dianne Chong  
Art Gurtel  
John Donhowe  
Teresa Lutterman  
Rob Parks  
Quinn Myhre

## June 2016

Bev Anderson  
Tom Anderson  
Bryant Wilkie  
Vanessa Wilkie

## January 2017

Sam Gunasekaran  
Judi Miller  
Chad Oftedal  
Lauren Sanner  
† Dick Swaisgood

## June 2017

Mark Davis  
Mary Davis  
Beth Donahoe  
Brent Hicks  
† Brett Nelson

## January 2018

Sharon Gurtel  
Joyce Kasper  
Elaine Koga  
Craig Miller  
Ruth Miller

## January 2019

Dave Marcrander  
Carla Smith  
Joan Tweten

## June 2019

Saint Andrew's Staff

## January 2020

† David Grindeland  
Dana Nasby  
Debbie Szabo  
Dick Szabo

## 2021

none

## June 2022

Sharon Gurtel  
Janell Erickson  
Linda Willenberg  
Dianne Chong  
Jean Wahlstrom  
Marvin Kananen  
Joan Tweten  
Beth Donahoe  
Mary Davis  
Dean Hobson  
Shirley Hobson  
Phillip Misner

## January 2023

Dana Nasby  
Stella Nieman  
Janell Erickson  
Karin Eklof  
† Lowell Arneson  
Art Gurtel  
Linda Powell  
Adam Schoen  
Johannes Grad  
Hillary Nordwell  
Melanie Grad

# Congregation Council



**Carolynn Ferris**

Congregation Council President

2023 was a year when we transitioned more fully out of the COVID-19 pandemic. All of our congregational and forum gatherings were held in person and/or in a hybrid manner. We also started taking communion at the rail once again. Being able to be physically together helped to reinvigorate relationships and cement our faith in fellowship and service to one another. Thanks be to God!

In this report, I would like to share a few highlights of the work that your Council accomplished in 2023. But first, I want to acknowledge my deepest appreciation and respect for each Council member. **Bill Brueggemann, Kit Bowerman, Aaron Davis, Tom Getzinger, Dan Johnson, Rob Parks, Becca Piel, Ann Ross-Clarke, Dick Szabo, Jean Wahlstrom, and Juliet Zhang** all contributed their time and talent to provide leadership for our congregation. I also want to give a special note of thanks for those serving on the Executive Committee: **Dan Johnson** (Vice President), **Bill Brueggemann** (Treasurer), **Tom Getzinger** (Secretary), and **Pastor Lara**. I have been truly blessed to be able to serve with and learn from each one of these amazing individuals.

We held our 2023 Annual Meeting in January in a hybrid fashion. We elected members of the 2023 Council and Nominating Committee, passed a resolution to allow Council to negotiate a lease with Emerald Heights Academy (this ultimately did not come about), passed the 2023 budget and recognized Quiet Servants. Once again, I would like to thank **Sherry Grindeland, Rob Parks, Aaron and Mary Davis, Kurt Lutterman, Doug Johnson, Sarah Shaw Newsum, and Susan Hegedus** for their help in supporting this meeting.

Early in the year, we conducted a Congregational Ministry Review. Input was gathered from staff and all Council members on various aspects of our congregational life. Feedback from this survey was the basis for a brainstorming session conducted in the Council Retreat held in March. Several ideas were generated and acted upon, one of which was to conduct a review of all of our committees. **Dan Johnson** took lead in interviewing leadership of all committees and reporting back to Council. Efforts have been made to ensure Council is actively engaged with all of our committees.

In April, we organized a workshop with representation from all of our Cluster churches: Saint Andrew's, Cross of Christ, Mount Si, Saint Luke's, and Sammamish Hills. There was a lively discussion where many ideas were generated around how we collaborate more effectively with one another. This was followed up by another Cluster workshop in November with members of the Executive Committees of all the churches meeting to share ideas. There was a great deal of energy and excitement around taking bold steps into the future. Coming out of that meeting, the clergy decided to approach serving all of our congregations as one – starting in February, pastors will be rotating to the different venues looking to amplify their gifts and serving our Cluster in new ways. Going forward, the Synod will also be helping to fund coaches to help us move forward in meaningful ways.

*continued on page 15*

continued from page 14

Our Semi-Annual Meeting was held in June. Informational presentations were given about the collaboration work within the Cluster, the potential to develop an affordable housing project on our property, and the Sanctuary Refresh project.

Staff reviews were also conducted in June.

In the summer, Council approved a \$500 scholarship from the Homer Berner Scholarship Fund for **Seeley Lester**. She is now a sophomore at Gonzaga hoping to pursue a career in Physical Therapy.

In the fall, work began to develop a Pictorial Directory. Our last directory was published in 2016 and everyone is very anxious to get updated information. Thank you once again to **Susan Hegedus** who is leading this effort.

An Affordable Housing Task Force was formed in the fall to help us work through issues around the possible development of an affordable housing project on our property. They have provided information in a Sunday Forum and has been available before and after services to answer questions and gather feedback. Ultimately, they will provide a recommendation to Council and a possible resolution to be voted upon in the 2024 Annual Meeting. Huge thanks to **Hal Ferris** (Chair), **Stephanie Lester**, **Kit Bowerman**, **John Nelson**, **Kurt Lutterman**, **Dick Lee**, and **Carol Schneider** for being willing to serve on this very important task force.

2024 will bring us more opportunities to accomplish our mission of **Growing Together in Christ to love and serve all people**. It will undoubtedly also present challenges. But I am very confident that, with God's help, we will move forward together with conviction, grace, purpose, and compassion.

Peace be with you all!

Carolynn Ferris



Installation of Council



Clergy Appreciation



Cider and Carols



Ice Cream Sundae Sunday



# Lead Pastor



**The Reverend Lara Forbes**  
Lead Pastor

*But grow in the grace and knowledge of our Lord and Savior Jesus Christ.  
To him be the glory both now and to the day of eternity. Amen.*

2 Peter 3:18

Dear Saint Andrew's Family,

As I write this, I'm also in the process of completing my annual report to Bishop Wee. A few of the questions in that report ask about congregational vitality and sustainability, and one asks what the neighborhood would miss about us if our congregation closed today. As I answered these questions, I thought a lot about "identity" – who we are as a congregation and how the events of 2023 helped shape us. Here are a few of them:

- † We began having conversations in earnest with the ELCA congregations in our cluster about partnering together in ministry in areas such as sabbatical coverage for pastors, pulpit exchanges, and sharing pastors among congregations.
- † We hosted the PorchLight (formerly Congregations for the Homeless) Men's Rotating Shelter twice.
- † We started the process of exploring what it means to live into our status as a Reconciling in Christ (RIC) congregation.
- † We mourned the deaths of several members, many of whom shaped the foundation of our congregation and some who had been continuing to help guide us toward the future.
- † We celebrated as we welcomed new members into our faith community.
- † We created a task force to explore the potential development of affordable housing on part of our property.

Each of these events, even the deaths, showed us Christ at work in our core values of worship, outreach, relationship, and discipleship. They reminded us of our identity in Jesus and opened our hearts to his presence among us. They moved us a few steps closer to a future for our congregation that is still unfolding.

These events also rooted us our mission statement *Growing together in Christ to love and serve all people*. This statement is in the active verb tense. That is, it's something we're doing now. We experience Christ's love as we share it with others and as we do, it shapes and nurtures our identity in him.

As a congregation, our identity in Jesus is always growing and, therefore, always deepening. It's an identity that invites us to look inward as we love and support one another. And it invites us to look outward as we serve our community in Christ's name.



*continued on page 17*



continued from page 16

As we move forward together, may our identity in Christ continue to strengthen us as we encounter the possibilities that God places before us. And may we remember that Christ walks this path with us.

Thanks be to God!

With peace,  
Pastor Lara

*O God, you have called your servants to ventures of which we cannot see the ending, by paths as yet untrodden, through perils unknown. Give us faith to go out with good courage, not knowing where we go, but only that your hand is leading us and your love supporting us; through Jesus Christ our Lord.*

Dedication of New Sanctuary Furnishings



## Shared-Time Pastor

**The Reverend Timothy Weber**  
Shared-Time Pastor



Thank you again in this new year for your continuing fellowship at Saint Andrew's---our connection around the Word and our mission in and with the World. In my role as Shared Time Pastor, my responsibilities in recent times have been focused on preaching and presiding in worship. Since I have had four surgeries in the last 24 months....three emergencies and one planned surgery in Houston...my overall work in the world has been slightly trimmed, and my ministry at Saint Andrew's has been more dedicated simply to our worship together. Since I am a Shared Time Pastor, Saint Andrew's "shares" my professional work with other sectors of involvement in the World---my clinical work as a Clinical Psychologist, teaching at Seattle Pacific University as an adjunct in the area of Executive Leadership, and writing both in the psychological field as well as in the theological domain. My basic learning through these last two years of medical crises has been a reiteration of what always has been there...but the surgeries have released massive doses of grace, mercy, and hope.....all powered by an enormous gratitude that daily invades my life. Crises always will break us in some way. But that's not the challenge. The challenge is whether we are broken open or broken apart. Being awash in the mercy of God has gifted me with a deeper, more thankful...moment by moment life. It has also sparked me to get more urgent..to attend to what needs to be done...to pay attention to what is most important. Many things that have been "on the burner" of life have rushed to the front line. Given that for all of us, life is short---there are no excuses, no time to fritter away, no "wait until tomorrow." There is self care, care for others, ventures that are uncertain, pathways unknown, doors that need to be opened with courage. Some of you have been victims or witnesses of all this in the last two years. I am grateful for what God has done through all these circumstances of life, what God continues to do, and the summons to step up, step out, and step into the callings before me. It's a summons to all of us.

continued on page 18

*continued from page 17*

One of these missions has been a project that will be completed in the next couple of months—a two volume set of books entitled **MAKING ALL THINGS NEW: OUR PREDICAMENTS ENCOUNTERING GOD’S PRESENCE**. These two volumes (with different covers to tell them apart) will be ready for distribution soon. They contain 49 sermons preached at Saint Andrew’s since about the year 2000. Each book is about 250 pages, I think. Another book will follow that will be shorter, but will include additional notes and study guides and questions...and will be published by a Christian Publishing House under the division of “Spiritual Formation.” I will let Saint Andrew’s know what the launch date will be. And I hope to do a brief presentation at Saint Andrew’s on the purpose of these volumes, which is to show how Word and World are correlated, linked, and inform each other in the mystery of the incarnation with Christ radiating from the center of it all. My major concern that drove this project was how so often in current Christianity there are extremes to either side: The Word gets preached with scant, minimal attention to how the Word penetrates with power the Worlds we live in. Or, the other problem is that the Word gets a “nod to God,” but the preponderance of attention is on the World...the fruits dominate the roots...the dominating narrative is less about our smallness and brokenness and the beauty and wonder of God’s grace and presence...and more about the World—usually either in terms of “pop psychology” or “social issues” that need fixing. The cross is in the rear view mirror and the windshield is filled with the World, with its many bugs, and a ton of window wiper fluid!!! A push to either one of these poles undermines the centrality of the Gospel and its power in our lives. When the cross that links the Word and the World is shifted to the side...we all are in trouble. So, in this project, I hope to address this challenge as Tillich stated to “cross” the Word with the World. I was in a project during my years at Concordia Seminary in St. Louis called “Crossings,” which was dedicated to exploring the power of the Word in the daily life of our worlds. This program has evolved over the decades and continues strong.

Thanks for your partnership in mission.

Pastor Timothy T. Weber



## Discipleship Ministries

### Director of Youth and Family Ministries



**Doug Johnson**

Director of Youth and Family Ministries

Some years, when you reflect back on all that has happened, you find that there are certain words or themes that come up that you didn't fully intend at the start of the year. When I look back at all that has happened with Youth and Family Ministries at Saint Andrew's in 2023, two words really come to the forefront: "community" and "seeds." These two words flow throughout all that we have done this year, from youth group to the Tiny House build. Together, these two words are connected as we have been planting seeds of community all year long.

### Seeds of Faith

Our faith is at the core of all we do. We plant seeds of faith with every activity, although some of those seeds are a little more intentional in having youth learn and grow in their faith. Youth of all ages gather together on Sunday mornings for Youth Education, where they dive into the lesson of the day. In 2023 we completed the first year of our new Cornerstone Ministry for confirmation and saw the start of the second year this fall. We continue to foster learning across all parts of faith, not just learning in the classroom. Beyond the classroom confirmands are learning about their faith by serving in worship, serving their community, and building relationships within the church. It wasn't just confirmands who were serving in worship either, we had children and youth of all ages helping with different parts of the worship service. This fall we had two youth affirm their baptismal promises on Reformation Sunday, Zoe Elien and Joshua Santjer. The youth didn't just learn about faith in Cornerstone Ministry and Youth Education; in the spring the youth asked a series of questions about faith and life that we explored together during youth group. In May, Adam Camrud and Quinlan Kasper attended the May Youth Weekend at Holden Village where we learned that we are created to be enough, that no matter what, in the eyes of God we are loved. We had four high school youth attend the Western States Youth Gathering at California Lutheran University in July. Here Adam Camrud, Abby Kasper, Zoe Elien, and Quinlan Kasper dug deeper in their faith through worship, speakers, workshops, and more. The seeds of faith have been planted in so many ways throughout the year, beyond what could be shared in this space.

*continued on page 20*

*continued from page 19*

## Seeds of Fun

The joke among youth directors is that people think all we do is play games, have fun, and eat pizza. Now, to be fair, all three of those are certainly true for this year but fun and games is only a small portion of what we do with Youth and Family Ministries. These seeds of fun are often the in-between spaces that facilitate other areas of what we do. And sometimes the fun is just for fun, and that is important, too! This year we have had a lot of fun whether it was playing games during youth group, exploring the virtual realm of playing Minecraft together, engaging in a wild game of Sock Samurai, exchanging gifts during the Christmas party, going to Disneyland after the Western States Youth Gathering (WSYG), or any of the other many adventures we had. This year has a well sown field when it comes to fun!

## Seeds of Support

This year, the seeds of support have come from many different places. You, as a congregation, have shown great support for the youth in the very generous support for both our Envelope Fundraiser in the spring and the Photo Directory Fundraiser in the fall. Your support has been so incredible and it has enabled us to do some incredible trips. There are seeds of support beyond financial assistance. Each month, youth receive a handwritten birthday card. In 2023, 38 birthday cards were sent to youth grades 6-12. I have also supported youth by attending their games, performances, and concerts. I know that there are so many more seeds of support that are sown from you, the congregation, in the many ways you support and encourage our youth.

## Seeds of Community

We continue to plant seeds of community and relationship. You could argue that every one of the ministries, programs, events, and activities that we do is a seed of community and I would not argue with you. When I talk about seeds of community, I think of the ways that we have brought our community together. One of the ways that we have done that is through the Park Days this summer. Park Days always bring people together from a wide range of ages and there is always lots of fun. We are also looking at ways to plant new seeds in our community. Two ways we are doing this is through the Growing Young Team and the new Faith and Family Center. The Growing Young Team is using materials from Fuller Youth Institute and Ministry Architects to help identify current ministries and new opportunities to prioritize children, youth, and family in our congregation (talk with me if you have questions). The Faith and Family Center, which was dedicated in December 2023, is the newest seed and we are still waiting to see the fruits that it will bear. However, all of these opportunities are exciting new ways to grow seeds of community.

## Seeds in the Community

We are also planting seeds in our wider community. In the spring of 2023 we had our first Easter Festival that saw over 350 people from our community come through our building for a fun afternoon of crafts, games, and activities. The congregation was packed full of excitement, fun, and fellowship. In October of 2023 we had our second annual Trunk or Treat. We built on the success of the previous year's Trunk or Treat with approximately 125 children coming through our parking lot. It was great to see people from the previous year come back this year. These community focused events are planting seeds with people in our community that we haven't been able to connect with otherwise. Who knows what these seeds will bring in the future?



*continued from page 20*

## Seeds of Collaboration

This year we continued the trend of collaboration and planted even more bold seeds of partnership within our cluster and synod. Some of these seeds were planted in previous years and others have been planted for the first time. We continued our ministry partnership with St. Matthew's Lutheran Church in Renton. We held multiple events together and are looking to continue sharing. We expanded on our collaboration with in our cluster this year, with the Tiny House Build and the Family Game Nights. For two weeks in August we partnered with Sammamish Hills Lutheran Church and Mt. Si Lutheran Church to build a Tiny Home for the Low Income Housing Institute. While we were building the tiny home, we completed a number of additional service and learning opportunities including touring the Snoqualmie Valley Food Bank and making tie blankets for the humane society. With 25 volunteers, both youth and adults, it was incredible experience for all. Building off of the success of the Tiny House, those same three churches started a family game night, held three times in the fall. Averaging close to 40 people per month, new relationships and new memories have been formed. Finally, we also participated in the Synod Fall Youth Retreat in November. Bobbi Cyr, from St. Matthew's, and I co-planned a synod-wide youth retreat for 6-12 grade youth at Camp Lutherwood. There were 75 participants at the retreat, including 60 youth, from 10 different congregations that explored the theme, "Created to be ME." It was truly an incredible event that brought youth together from across our synod. Youth and adults are already excited for next year's retreat. It is exciting to see all these new seeds coming to life through these efforts of collaboration.

*continued on page 22*



Community Easter Festival



Youth Synod Fall Retreat



Youth Mini Golf



continued from page 21

## Seeds of Relationships

If the seeds of faith are our core, then the seeds of relationships are our roots. Every single one of the seeds listed above is rooted in relationships. Relationships between youth, adults, leaders, staff, volunteers, churches, organizations, communities, and more are all coming together in new and exciting ways. These seeds of relationships will continue to grow and spread. Some will grow naturally and others will need to be nurtured and tended to with great care.

As you can see, a lot of seeds have been sown this year. Some of the seeds that have been planted this year have already started to grow and show great promise, others are just starting to germinate and are ready to break the surface, and others are more freshly planted and are enjoying the comfort of new soil. No matter what stage these seeds are in, they will still need to be watered, nurtured, and stewarded with care before they fully bear fruit. As long as we are open to the guidance of the Holy Spirit and are faithful in our efforts, these seeds and others will bear fruit in our congregation, in our cluster, in our community, and beyond.

None of this work would be possible without all the hard work and dedication of so many volunteers. Our youth education teachers, the Discipleship Ministries Committee, retreat and trip leaders, Tiny House volunteers, youth group leaders, mentors, and more. With dozens of volunteers throughout the year, there are too many to name; thank you all for helping this ministry grow.

I also want to thank the families of this congregation for the opportunity to serve you here at Saint Andrew's. It is truly a blessing to be able to be a part of such a faithful and loving community.

Peace,  
Doug Johnson

## Discipleship Ministries Committee

The Discipleship Ministries Committee (DMC) supports all aspects of Christian Education at Saint Andrew's, including Sunday Church School, Adult Forum

and Fellowship hours, as well as Children, Youth and Family Ministries. The DMC also directly supports the work of the Director of Youth and Family Ministries. In addition to the Committee

### Participants

Aaron Davis, Council Liaison (February 2023 to present)  
 Mary Davis  
 Beth Donahoe (through September 2023)  
 Tom Getzinger, outgoing Council Liaison (February 2022-January 2023)  
 Sherry Grindeland, Fellowship Coordinator  
 Doug Johnson, Director of Youth and Family Ministries  
 Dana Nasby, Chair  
 Lois Nelson (through November 2023)  
 Ann Ross-Clarke, SCS Teacher and Council Liaison (February 2023 to present)  
 Ann Thorpe, Sunday Church School Coordinator

continued on page 23

*continued from page 22*

members listed, Saint Andrew's is blessed with gifts of time and talent from teachers, adult chaperones, guest speakers, facilities helpers, and, of course, the members of the congregation. We thank God for every person and every moment of ministry, and we look forward to growing together in Christ in 2024.

## Sunday Church School (SCS)

The Sunday Church School class meets during the Discipleship/Education Hour. On average, three children attend the class, with two others attending sporadically. Led by Ann Ross-Clarke, the class has this year welcomed the assistance of a high school youth helper, Alex Lynn. The class uses the Narrative Lectionary Curriculum.

Due to the ongoing small class size, the DMC has begun discussing potential changes to the structure of SCS. No decisions have been taken and any changes we agree to make will be implemented in Fall 2024.

## Cornerstone Ministry (formerly Affirmation of Baptism/ Confirmation)

Cornerstone Ministry, designed and written by Saint Andrew's Director of Youth and Family Ministries Doug Johnson, with help from other congregational leaders, began in 2022. Cornerstone Ministry is centered in Biblical study and rooted in the congregation's core values.

Cornerstone Ministry is defined by and centered on four cornerstones: Relationship, Discipleship, Worship, and Outreach. Youth participate in Discipleship/Education Hour classes, retreats, worship leadership, service projects, mission trips, and other activities that frame and form the structure of their faith formation. The 2023-2024 Cornerstone class has an average attendance of 9 youth.

*continued on page 24*



continued from page 23

## Youth Ministry (6-12th grade)

Please see Doug Johnson's section of the report.

## Adult Education

Submitted by Kit Bowerman, Adult Education Planning Team Chair

### **Sundays**

The Adult Education Planning Team was very busy in 2023 engaging speakers for a wide variety of topics for the 9:00 am Adult Discipleship/Education Hour. Recordings are provided with permission of the presenter and as volunteers are available. Topics ranged from Bible Studies, updates from our Saint Andrew's Church Committees and Groups, JEDI Group, KidVantage, Backpack Meals for Kids, Compass Housing Alliance, intergenerational classes, as well as information and discussion about Congregations for the Homeless (now PorchLight), hospice, the Performing Arts Festival/Eastside (PAFE), the history of Saint Andrew's, and a representative from Mars Jewett Financial Group presenting the topic "graceful giving". Some hours were enjoyed just having coffee and conversation with fellow members.

The Adult Discipleship/Education Hour was also the platform for Worship and Liturgical Arts to inform the congregation about the Sanctuary Refresh, and for the Housing Task Force to inform us about the possible use of the church land for a multiple unit apartment complex that will accommodate low-income people in the local area.

The members of the Adult Education Committee are: Kit Bowerman, Jean Wahlstrom, Ed Corker, Dan Johnson, Pastor Lara, Sherry Grindeland, and Susan Hegedus. I wish to thank all of the members who have put so much of their time brainstorming ideas for good programs, and then finding speakers to educate our congregation. I also want to thank all of the speakers who took their time to make the programs a success. If the Adult Forum programs are of interest to you, feel free to contact any of us on the Team and join the fun.

### **Midweek**

Pastor Lara leads a midweek Bible study, with both in-person and online participants. The Tuesday Morning Men's group meets weekly at 8:30 am on Zoom.

## Intergenerational Ministry

Saint Andrew's has a long history of intergenerational ministry and faith formation. A highlight of 2023 was the completion of work to renovate the former Nursery Space into a new Faith and Family Center. Funded in part by a \$6,000 Grace Grant, the renovation work involved demolition, sorting, and moving along usable materials, designing the new space, sourcing necessary furniture and supplies, painting, and additional work. Thanks are due especially to Doug Johnson and Kurt Lutterman.

The many helpers represented all segments of the congregation. Other intergenerational events included the inaugural Easter Festival, several summer gatherings for families at Robinswood Park, and another successful Trunk-or-Treat event in late October.

Blessings,

Dana Nasby, Chair

Discipleship Ministries Committee





## Fellowship

**Sherry Grindelnd**  
Fellowship Coordinator



### Advent Dinner Church Was “Souper” Event

Soup, fellowship, and Bible study were on the menu for the Advent Dinner Church programs Wednesday nights in December.

Congregation Council members prepared three kinds of soup for the December 13th inaugural gathering. The Health and Wholeness Ministry Committee cooked its traditional taco soup for December 20th.

The first session – slated for December 6th, was cancelled due to Covid exposure.

People gathered at 6:00 pm, we prayed at 6:15 pm, then enjoyed a soup dinner and fellowship.

Each table read and talked about a Bible passage. Then everyone participated in a large group discussion.

Our time concluded with communion and prayers of sending.

### Advent Fair Prepares for Holiday Season

At Saint Andrew’s Lutheran Church we prepare and practice the season of giving at our annual Advent Fair.

On December 1 our congregation assembled emergency food bags for Hopelink, made critter blankets for the Seattle Humane Society, and made paracord bracelets for service men and women.

The paracord bracelets, something we’d done before Covid, were revised by Advent Fair Chair Joan Brennan. These bracelets aren’t for decoration – they provide our military personnel an easy way to carry cording.

Greenery and bases were available for families to make advent centerpieces or wreaths.

Nancy Davis set up a card making station and we had our always tasty cookie-decorating table.

The youth who oversaw the cookie table created frosted masterpieces for a cookie tray for our neighboring Bellevue Fire Station crew.

### Church Bags Project Update

Our children’s church bags now come in two sizes. Not the bags, just the contents.

Originally designed to help entertain “littles’ during church service, we realized the contents didn’t appeal to the not-so-little age group.

Teresa Lutterman suggested going to two different bags. (Teresa helps clean and refill the bags every few weeks.)

A couple of our talented seamstresses sewed a few larger bags and since the fall of 2023 we offer activity bags for littles who can’t read yet **and** bags for older kids.

*continued on page 26*

*continued from page 25*

What's in the bags?

The littles get a picture book, a scratch pad, a few coloring crayons, stickers, and a page to color.

The bigger littles get a book geared to young readers, scratch pad, crayons, a pen, and a puzzle or two.

We change out the books, coloring pages, and puzzles to the appropriate church season.

Both sets of bags are stocked with a treat such as such as Gold Fish or Vanilla Wafers.

Sorry, we have no plans to create an adult version. 😊

## Holiday Cheer: Cider and Carols Returns

During Covid, Saint Andrew's folks launched a Cider and Carols gathering the first Friday of December.

People gathered around a bonfire in the parking lot, sipped hot cider, and nibbled on holiday treats. Music Director Will Simpson played Christmas carols for a sing-along.

Unfortunately, weather didn't cooperate for 2022 and 2023. We had to move the event indoors to the Fellowship Hall.

On the good news side, participants were warmer. Plus there was enough light to read the music!

## We Dined in Style on Easter

Thanks to a number of Saint Andrew's bakers, the Easter Morning Continental Breakfast was delicious!

Homemade coffee cakes were the highlight. Attendees also enjoyed fresh fruit, juice, cheeses, and the usual array of coffee and tea.

The volunteers who helped included Janell Erickson, Terri Anderson, Karen Getzinger, Helen Ryan, Jay Baxter, JoAn Eklof, and Shirley Hobson.

Special thanks to Janell, Terri, Jay, and the rest of the set-up team and the cleaner-uppers who included the above plus Michele Vossler and John and Joyce Nelson.

## Crowd Around for Ice Cream

Two new fellowship opportunities proved popular in 2023.

To celebrate the Fourth of July, we held an Ice Cream Sundae Sunday.

Following the church service on July 2, volunteer scoopers dished up bowls of ice cream. Participants got to add toppings of their choice including butterscotch, hot fudge, and marshmallow.

Of course we had whipped cream and cherries for the top.

In September for Labor Day weekend we again depended upon volunteer scoopers to line up root beer floats.

*continued on page 27*



continued from page 26

## Lenten Prayer Partner Program Recap

Each Lent the Saint Andrew's Church community focuses on praying for one another through the Annual Prayer Partner Program.

Participants sign-up prior to Ash Wednesday and are assigned a person to pray for during Lent. People may make special requests such as praying for health, family, or challenges they may be facing. While they are praying for a specific person, someone else is praying for them – but the someone else is a secret.

Many partners send the person they're praying for cards or notes throughout Lent.

In 2023 we had 59 participants.

People learned who was praying for them on the Sunday after Easter.

## OWLS Welcomes All Ages

Although they're called the OWLS – Older, Wiser Lutheran Saints – all ages are welcomed at the monthly potluck with a program.

We can guarantee that at some point, you'll say, "I didn't know that."

Typically, the group meets the third Tuesday of the month during the school year. Occasionally the OWLS fly the nest and go on a field trip.

Here's what you missed in 2023:

**January** - Andi Soccoccio, the Culture and Belonging Manager at the Humane Society, shared about ways the animal welfare group helps people keep their pets.

**February** – T-shirt contest! Folks brought their favorite t-shirt and people guessed whose it was and listened to some fascinating stories about the shirts.

continued on page 28

O.W.L.S. Tour Boehm's Candies in Issaquah



Ice Cream Sundae Sunday



Root Beer Float Sunday



*continued from page 27*

**March** – The OWLS went to Snoqualmie and toured the Northwest Railway Museum’s Education and Restoration centers. The Education Center explains how the railroads made history and changed the American life. Yes – we ate – at the buffet at the Snoqualmie Casino where every dessert was sampled by our group.

**April** – Two lawyers from the Washington State Attorney General’s office taught folks how to fight scams and robo calls.

**May** – Did you know the City of Bellevue has an official demographer? One of his duties is to track the diversity in the city.

**June** – OWLS on vacation

**July** – A tasty outing included a wonderful tour of Boehm’s Chocolate in Issaquah followed by lunch at the XXX Root Beer. For many, that was the last (and sometimes first) visit to the XXX Root Beer historical landmark that closed in late 2023.

**August** – OWLS on vacation

**September** – OWLS didn’t meet because Saint Andrew’s hosted the PorchLight (formerly Congregations for the Homeless) rotating men’s shelter.

**October** – We took a walk on the pilgrim trail, vicariously following in Jean Wahlstrom and Marvin Kananen’s footsteps as they walked along the Camino de Santiago, Porto North in Portugal and Spain. Wonderful pictures and tales of their adventures.

**November** – King County Assessor John Wilson talked about what his office does and how to apply for property tax relief. Here is the link and the telephone number for his office to see if you qualify:

<https://kingcounty.gov/en/dept/assessor> (scroll down to find the subject matter you need such as senior exemptions)

<https://kingcounty.gov/en/dept/assessor/buildings-and-property/property-taxes/tax-relief/senior-or-disabled-exemptions>

The direct line to a senior exemption expert is 206-296-3920.

**December** – The OWLS celebrated Advent and Christmas season with baked ham and a Christmas carol sing-along, led by Saint Andrew’s Lutheran Church’s Director of Music Ministries Will Simpson.

## Welcoming People to Saint Andrew’s

Thanks to dedicated volunteers, people attending Saint Andrew’s Lutheran Church receive a warm welcome, a morning treat, and hot chocolate, hot tea, or hot coffee.

Greeters stand just inside the doors to the Narthex. As people arrive, they’re greeted with a warm smile and a welcome message.

Coffee hosts arrive right after 8:30 am on Sundays to brew coffee. Treats are optional but most hosts bring doughnuts or home-baked items.

We have either a pre-service Adult Education Forum, Bible study, or conversation and fellowship opportunity. Youth who go to Sunday classes are welcomed at the treat table, too.

In recent months we’ve left the coffee service set up for after service conversation.

Volunteers are appreciated and needed to keep this program vital.

*continued on page 29*

continued from page 28

We're trying to increase our greeter corps so we can cover the entrance from the ADA parking lot on the west side of the building as well as the main doors on the east side.

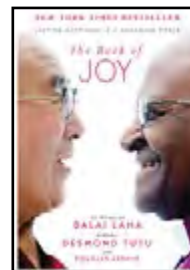
More coffee volunteers are needed to keep the after worship fellowship operational.

To volunteer, contact Fellowship Coordinator Sherry Grindeland at 425-746-2529 or [sherry@salc.church](mailto:sherry@salc.church).

## Women's Early Book Study (W.E.B.S.)

Submitted by Cheryl Jurrus

This past year we decided to read and study a variety of books with different themes. We started the 2023 Winter session by finishing our discussion of *The Book of Joy* by Desmond Tutu, Dalai Lama, and Douglas Abrams. This book was just bursting with ideas, stories, and uplifting advice. It also explored the common beliefs about joy that are shared among Buddhists, Christians, and Jews. Netflix has an excellent short documentary about the meeting of these three men (*Mission: Joy - Finding Happiness in Troubled Times*).



We also read and discussed the book *Lineage of Grace* by Francine Rivers during the Winter and Spring Sessions of 2023. We learned about Tamar, Rahab, Ruth, Bathsheba, and Mary; all of them were included in the genealogy of Jesus, as recorded in the book of Matthew. The author used the Biblical stories, but she embellished them with cultural details, emotional feelings, and dialogue.



For our Fall Sessions, we selected *The Personal Librarian* by Marie Benedict and Victoria Murray. This was a surprising story about Belle de la Costa Greene who became the head librarian for J.P. Morgan's renowned library in New York City during the early 1900's. It was recently discovered that she was "passing" for white and the story explored the extent of discrimination in New York and D.C. during that time.



We have been meeting at Saint Andrew's as well as by Zoom. This "hybrid format" works well for our group. We meet on Wednesday mornings from 10:00 am to 11:30 am and all women are welcome! We share our own stories, opinions, struggles, and celebrations with laughter, prayer, respect, and confidentiality. Our next book for Winter 2024 is Michelle Obama's *The Light We Carry*. Contact Cheryl Jurrus for the schedule and Zoom link.

## Grateful for the Women's Retreat

The Annual Women's Retreat was moved to November in 2023 due to scheduling conflicts. The theme was *GRATEFUL: How to Find Joy in the Midst of Life*.

The gathering of women from Saint Andrew's, Our Savior, and Mount Si Lutheran churches was held at Rainbow Lodge in North Bend.

Christian humorist Donna Oiland was the guest speaker. She encouraged women to write their stories and to be grateful for our blessings.

Saint Andrew's partners with Our Savior Lutheran Church in Issaquah to host this annual gathering that features a speaker, games, good food and fellowship.



# Worship and Liturgical Arts

## Director of Music Ministries



**Dr. Will Simpson**

Director of Music Ministries

2023 was a year of continuing to find a normal, whatever “normal” is or was, but also, seeking new horizons and doing things differently.

Among items that we have restarted and continued are our concert series, with several concerts by Leslie Johnson’s string quartet and the Bells of the Sound Christmas Concert which drew in over 340 people. For us, this series is a combination of reaching the local community and our own people through God’s gift of music. We look forward to several concerts this Spring, please help us support this series with your attendance.

We restarted handbells with Vanessa Wilkie leading that ensemble. Though presently diminutive in number, our bell choir will grow and continue to provide an outlet for members of our congregation. Several members from Cross of Christ have and will join our ensemble soon. We appreciate the timbre and color that handbells brings to worship. If you are interested in handbells, we would love to have you join us! Please contact Vanessa Wilkie.

Our Chancel Choir continues to attract new people and we look forward to exploring areas of growth. Sadly, however, we have lost our beloved choir member Dick Swaisgood, who died. Dick did an incredible amount for our music department over many years. We will miss his voice and his positive, affirming presence. The Chancel Choir is an integral part of worship, helping us to sing new hymns and new liturgies. Our aim and goal in choir is to glorify God through music and liturgy. I think they do a tremendous job of singing and providing a presence up front to lead worship. The choir had the honor of providing music for a synod meeting at Saint Andrew’s in June. I heard many compliments from members of other churches regarding how good our choir is. If you are interested in Chancel Choir, we would love to have you join us! Please contact Will Simpson.

We continue to involve youth in many different ways in our music program, primarily through our instrumental ensembles and solos. We also involve several adults in solos and various ensembles. Our instrumental ensemble continues to grow in number, playing for Reformation, Easter, and Christmas Eve services.

Finally, I would like to say a hearty thanks to Sharon Gurtel, who is indispensable in her help with many areas of making worship happen. She is active in many areas and is present on a weekly basis, giving many hours of service! What we do in worship doesn’t just happen. It is brought together by many people who are dedicated to providing the best we can offer to the glory of God. I would like to additionally thank Elaine Koga, who is our accompanist and who also fills in for me when I am away. Thanks to Vanessa Wilkie, who is also on our music team. She has been working hard to restart our bell program.

*continued on page 31*



continued from page 30

And, finally, thanks to all of you for supporting us and for attending worship. It takes all kinds of people. People to perform and also people to receive and listen to the gifts that are abundant in our talented congregation. Thanks to you, and most of all, thanks be to God!

Respectfully submitted,  
Dr. Will Simpson



# Worship and Liturgical Arts Committee (WLA)

## 2023 Summary

The Worship and Liturgical Arts Committee (WLA) considered and provided guidance on a number of topics related to worship over the course of 2023. These included communion distribution, the return of healing ministers, offering collection practice, volunteers serving in worship, trials of hand-holding during the blessing and incorporating youth in some worship roles in addition to acolyte service. WLA's deliberation on all topics grounded in 1) continuous improvement principles, 2) support of finding the best fit practices for the congregation, 3) using data in our analysis and decision-making whenever possible.

WLA re-engaged with its multi-phase sanctuary refresh project that had begun in 2017, and then was paused due to the pandemic. The donor-directed funds given to WLA for this project to update the look and feel of the sanctuary gave us an opportunity to consult with interior designers and artists to shape the vision of what could be. The vision began to be realized with the build, delivery and dedication of a lectern, baptismal font and Christ candle holder imagined and built by a local artist.

WLA continues to provide support to Will Simpson, Director of Music Ministries, in his efforts to increase participation in all Saint Andrew's ensembles, provide excellence in all aspects of music at Saint Andrew's and expand the music used in worship with new hymns and liturgies.

## Looking Forward

WLA is looking forward to completing the first phase of the sanctuary refresh by restoring the altar rail and wood panels of the altar to their natural oak tone. This change will provide a cohesive look with the new furnishings and will considerably lighten the space. (See included photo of what it could look like!). We will be scheduling a listening session early in 2024 to hear ideas from the congregation as we consider next steps for this project. 2024 looks like a challenging year for WLA. As always, WLA's focus will continue to be on worship, music and the worship space. In addition to WLA's commitment to continuous improvement, a few specific action steps will address some needed improvements that are smaller in scale such as:

- † Consider better microphones to replace some of our directional mics.
- † Consider new handbell table pads and covers.
- † Consider the possibility of additional new choir stoles.

## Participants

Jan Benson  
 Matt Camrud (through May 2023)  
 Pastor Lara Forbes  
 Tom Getzinger, Council Liaison  
 Sharon Gurtel, Chair  
 David Mills (beginning September 2023)  
 Phillip Misner, Altar Guild  
 Will Simpson  
 Misty Weber  
 Vanessa Wilkie



*continued on page 33*



continued from page 32

- † Replace worn choir folders.
- † Renew/paint worn music stands.
- † Prepare to robustly support worship as cluster congregations' discussions evolve.

A huge thank you to all of the WLA members for their wonderful spirit, participation and contributions over the past years. Our collective worship experiences across many congregations enrich our discussions and inform our decision-making.

Respectfully submitted,  
Sharon Gurtel, Chair  
Worship and Liturgical Arts Committee

## Building and Property Committee

The Building and Property Committee continues to respond to the opportunities and challenges providing a safe and welcoming facility for both our congregation and the greater community.

### 2023

For 2023, some of the highlights listed below are among the 115 work order tasks completed.

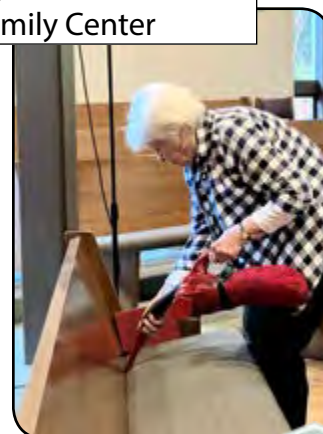
- † Partnered with the Saint Andrew's Director of Youth and Family Ministries in the renovation of the nursery building space, transforming it to now be used as the "Faith and Family Center".
- † Hosted the Rotating Shelter of PorchLight (formerly called Congregations for the Homeless) for the months of March and September.
- † About twenty-five outside user groups now meet at the church. Included was the Performing Arts Festival of the Eastside in which approximately 1,000 people came through the church doors over the week of the event.
- † Held spring and fall "All Church Work Days" cleaning up and improving the church grounds. The spring work day was especially successful as there were many volunteers including members of a Girl Scout troop and a Cub Scout troop.

### Participants

Kit Bowerman, Council Liaison  
Kurt Lutterman, Facilities Manager  
John Nelson, Chair  
Gary Rudolph  
Ron Ryan



All Church Work Days included helping to renovate the Faith and Family Center



continued from page 33

- † Started a mid-week group called “Morning Screwdrivers” with the goal of good fellowship while completing some work tasks. Though there was not enough interest to keep it going, it was worth trying something new.
- † Partnered in August with Lutheran youth groups from Saint Andrew’s, Sammamish Hills, and Mt. Si in the construction of a tiny home.
- † Identified major maintenance items and associated costs that need to be addressed in the near future.
- † “Kept tabs” on the progression of Bellevue’s rezoning of faith-based properties that allow the development of affordable housing. Once approved, some members of our committee are now participating in the Saint Andrew’s Housing Task Force that is in contact with Imagine Housing, the potential developer.
- † Communicated with and gave permission to Erik Newsum for his Eagle Scout project developing an outdoor worship space in the church courtyard. The completed project looks wonderful.
- † Replaced Sanctuary lights with LEDs leading to significant electricity and cost savings.

## 2024 Plans

- † Host the PorchLight rotating shelter for the month of June.
- † Provide the venue for the week-long Performing Arts Festival of the Eastside for the week following Easter along with providing space for other outside user groups to meet.
- † Hold “All Church Work Days” in the spring and fall.
- † Organize a group from Saint Andrew’s to volunteer for the day at Sound Foundations building a tiny home.
- † Coordinate with Council possible plans for addressing the major maintenance items.
- † A new energy efficient freezer is to be purchased for the Scullery replacing the old chest freezer.
- † Continue involvement in the potential development of affordable housing on the vacant land east of the main church parking lot.



Preparing to Host PorchLight Rotating Men’s Shelter

The Congregation and the Building and Property Committee lost two valuable members, John Gowdy and Dick Swaisgood, during the year. We welcome new members to join our committee in 2024.

Blessings,  
 John Nelson, Chair  
 Building and Property Committee



# Communications Committee

The Communications Committee did not formally meet in 2023. However, the committee did confer via email and Zoom on the following:

- † Participated in the Committee Review process led by the Congregation Council and Dan Johnson.
- † Discussed and gave feedback on the outdoor welcome banner for the corner of 148th Avenue SE and SE 28th Street.
- † Formulated a procedure for decision-making when conflicting priorities or requests arise regarding communications.

Susan Hegedus on behalf of the Communications Committee

## Participants

Becca Piel, Council Liaison  
Rob Parks, Council Liaison  
Susan Hegedus, Communications Specialist  
Kendra Mills  
Dick Swaisgood  
Judy Thiel

# Health and Wholeness Ministry Committee

## Mission Statement:

*To be a Christ centered partnership of healing professionals and other members of Saint Andrew's committed to promoting spiritual, physical and emotional health and wholeness.*

## Inreach Ministry:

- † **Planning Retreat:** We began the year with a planning retreat where we planned our activities and reviewed the organizational wheel. Janell Erickson led us in an insightful activity that helped us think about what we truly value in life and what it would be like to face death and loss of all those things.
- † **Cards and Care Notes:** Donna Nellist sent get well, thinking of you, and sympathy cards. The cards are made by the Saint Andrew's stampers. Jay Baxter and Cheryl Jurrus sent 26 notes with a Care Note, "Your First Christmas After a Loved one Dies", to those who lost a loved one during the year.
- † **Meals and respite care:** Janell Erickson coordinated members of the congregation to provide meals and short-term respite care when needed.

## Participants

Terri Anderson  
Jay Baxter  
Janice Benson  
Dianne Chong  
Janell Erickson  
Carolynn Ferris, Council Liaison  
Cheryl Jurrus  
Ruth Miller  
Donna Nellist  
Stella Nieman, Chair  
Mikel Oswalt  
Jakki Parks  
Helen Ryan  
CJ Tatum  
Beverley Watt, Chair

continued on page 36

continued from page 35

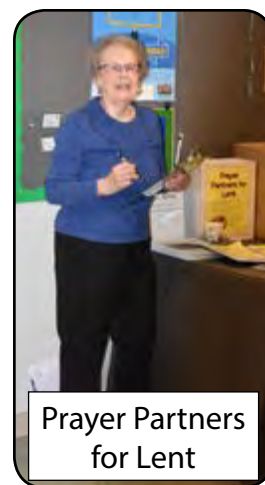
- † **Transportation:** Mikel Oswalt took over the coordination for transportation to doctors appointments this year.
- † **Lenten Prayer Partner** program had 50+ congregation members praying for a secret prayer partner during Lent. Sherry Grindeland, Fellowship Coordinator, was assisted by members of the committee to sign up participants.
- † **Prayer tree** is where members can request a prayer for themselves or others. Pastor Lara coordinates and Mary Mills, Office Administrator, sends out the email requests.
- † **Congregation Care Team** is a ministry to connect those who are unable to come to worship, are homebound, or have had a recent illness with a phone call, visit, or to distribute Holy Communion. Pastor Lara leads us and Sherry Grindeland and Stella Nieman are coordinators. We have 6 members of the congregation participating and we welcome others. We meet by Zoom the second Wednesday of the month at 2:00 pm. Some members are trained to serve as Lay Eucharistic Ministers and take Holy Communion to those who request it.
- † **Healing Prayer Ministry** was restarted this year. Prayer is offered for oneself, others, or for thanks by healing prayer ministers during communion. The stations are located behind the organ and the bell choir tables. This is offered every third Sunday. Cheryl Jurrus is coordinating.
- † **Dan Johnson, Council Vice President** met with us to discuss what is working as a committee, what challenges we face, and how we can think creatively to effectively accomplish the mission of our committee now and in the future. This was done in response to our alignment with the congregation calling to "Grow together in Christ to love and serve all people."



KnitWits



Personal Care Kits



Prayer Partners for Lent



Blessing of Healing Prayer Ministers

continued on page 37

continued from page 36

- † **VOICE articles:** each month Cheryl Jurrus and Jay Baxter coordinate health related articles. These are written by members of the congregation or other health professionals.

## Outreach Ministry:

- † **Personal Care Kits for Lutheran World Relief (LWR):** 189 kits were shipped in May and 137 in November for a total of 326 kits. These personal care kits contain a towel, toothbrush, large comb, 2 bars of soap, and a nail clipper. They are sent to countries who have experienced a weather related disaster, wars, and the poor. Kits were sent to 95 countries last year. Thrivent grants helped us secure supplies along with the congregation members' donations. The older youth discipleship classes helped pack at each event and they also learned about LWR and its ministry. Ruth Miller is the coordinator and she is assisted by the committee and congregation members.
- † **KnitWits (Knitting as Witnesses):** Many members knit prayer shawls, baptismal blankets, wash cloths, hats, scarves, and mini prayer shawls. In 2023, we were very appreciative of the talent and time that the KnitWits contributed to creating more than 800 items. We are also grateful to Pastor Lara for the generous donation of yarn. Items made by the KnitWits were distributed as follows:

### Locally

Saint Andrew's Lutheran Church - 20 prayer shawls,  
2 baptismal blankets, more than 45 pocket prayer shawls  
Compass Housing Alliance – 30 hats  
PorchLight – 12 hats  
KidVantage – 12 shawls, 62 blankets, 15 hats, 45 scarves,  
25 sweaters, 12 wash cloths

### Nationally

Click for Babies – 3 hats,  
10 booties to educate parents on preventing shaken babies  
Knit Your Bit – 10 scarves for WWII veterans  
Knots of Love – 12 chemo caps for cancer patients  
One Nation Walking Together – 8 wash cloths, 4 bibs,  
8 pot holders for Native Americans  
Pink Slipper Project – 136 wash cloths, 4 blankets, 166 baby booties,  
5 pet cozies, 4 slippers for victims of domestic abuse  
Red Scarf Project – 6 scarves for foster youth in college  
Saint Louis Humane Society – 9 pet cozies  
Welcome Blanket Project – one blanket for refugees

### Globally

Operation Gratitude – 25 scarves for soldiers  
MGLSS (MaaSAE Girls Lutheran Secondary School) – 60 hats for students in Tanzania  
Warmth for Warriors – 12 wool caps for soldiers  
World Vision Knit for Kids – 12 hats, 2 blankets for kids in poverty areas



continued on page 38



continued from page 37

As we continue to grow our ministry we have **opportunities for congregation members to share and serve:**

- † **Donate items for the LWR Personal Care Kits**, especially during Lent with the *Baskets of Promise* drive. Ruth Miller coordinator
- † **Support KnitWits** projects by knitting or crocheting projects or donation of yarn—contact Dianne Chong
- † **Provide meals when needed:** Janell Erickson coordinator
- † **Provide transportation when needed:** Mikel Oswald coordinator
- † **Make phone calls to members** in coordination with the Congregational Care Team

Submitted by Stella Nieman on behalf of  
 Stella Nieman, Co-Chair, and Beverley Watt R.N., Faith Community Nurse and Co-Chair  
 Health and Wholeness Ministry Committee

## Human Resources Committee

No report. The Executive Committee performed the function of the Human Resources Committee.

## Outreach and Servant Ministries Committee

### Outreach and Servant Ministries Mission Statement

*Out of the center we live our faith and celebrate it through intentional caring service, while growing in Christ.*

Outreach and Servant Ministries at Saint Andrew's Lutheran Church supports and is actively engaged with many agencies that we have a collaborative relationship with, centered around the issues of hunger, housing, and education. Outreach embodies the spirit of inclusion in our mission to others as Christ calls us to be His hands, feet, and heart. We are involved in local and global missions both financially and in active participatory support. Saint Andrew's supports many organizations by providing the use of its building for office space and meetings. Saint Andrew's offers many opportunities to serve Christ by giving of our time, talents, and gifts to others in response of our gratitude to Christ.

### Participants

Ann Thorpe  
 Becca Piel  
 Cheryl Jurrus  
 Debbie Szabo  
 Jay Baxter  
 Jean Wahlstrom, Council Liaison  
 Linda Willenberg  
 Liz Rudolph  
 Shana Nielsen  
 Sherry Grindeland  
 Dick Szabo, Chair

continued on page 39



continued from page 38

Saint Andrew's partners with a number of organizations, both local and global, to help our neighbors meet basic needs. During 2023 a number of these organizations visited Saint Andrew's to present their work to our congregation at one of our Sunday Discipleship Hour Forums. These included PorchLight (formerly Congregations for the Homeless), KidVantage (formerly Eastside Baby Corner), Compass Housing Alliance, Imagine Housing, and Operation Bootstrap Africa (OBA).

We highlight a different one of our partners each month with a Ministry of the Month article in *the VOICE* newsletter. Some of the new events this year were the Day of Service in May, the Christmas in July event, and the volunteer event at KidVantage in December.

Here are the highlights of the outreach events and efforts at Saint Andrew's this past year:

## The Sophia Way

The Sophia Way continues to serve the Eastside community by providing a caring, supportive environment for women who are on their journey from homelessness to safe and stable living. The Sophia Way has two shelters, housing 48 women at Helen's Place in Kirkland and 21 women at Sophia's Place in Bellevue. Sophia's Place is also an emergency shelter, open to all ladies, from 8:00 am to 3:00 pm, 7 days a week.

Saint Andrew's provided hot meals for about 30-35 ladies at Sophia's Place five times during the year, in March, May, July, September, and November. About 50 ladies from Saint Andrew's have helped to prepare and donate delicious meals for these lunches. Some church members also attend the monthly Support Network meetings and volunteer at The Sophia Way shelters and donation center.

**In 2023, Saint Andrews' supported The Sophia Way with \$4,675 from our Outreach budget.** Many church members have donated clothing and other needed items to the organization. Also, the Love Tree program provided 34 gift cards to go in the holiday gift bags for the ladies supported by The Sophia Way.

(For more information about The Sophia Way, visit: <https://sophiaway.org/>)



## Backpack Meals for Kids

Backpack Meals for Kids provides meals for kids in the Bellevue School District who receive free meals provided at school during the week. These children often go hungry on the weekends. Backpack Meals provides easy-to-make meals each Friday, so kids have food to eat over the weekend. Backpacks are also provided free to children who need them when they join the program.



Childhood hunger is a fact of life in Bellevue. One in five students in the Bellevue School District qualifies for free and reduced-price meals at school. For some of these kids, school meals represent the bulk of their weekly nutrition. When children are hungry, everything becomes more difficult, including learning.

The idea of Backpack Meals for Kids originated at a 2011 meeting of a school district, staff, and community volunteers. Backpack Meals for Kids is a community based non-profit organization run entirely by volunteers. Each year, the volunteer group has been adding schools and increasing the number of food packs.

continued on page 40

*continued from page 39*

During the 2022-2023 school year, Backpack Meals provided over 15,000 weekend packs of food for Children in K-12.

**In 2023, Saint Andrew's supported Backpack Meals with \$480 from our Outreach Budget.**

Some members help on Thursdays by delivering the food packs to schools for distribution on Fridays. During the Tiny House build event, the youth packed 200 pre-school meal packets for Backpack Meals for Kids.

(For more information visit: <https://backpackmeals.org>)

**MaaSae Girls Lutheran Secondary School (MGLSS) – Tanzania  
(via Operation Bootstrap Africa (OBA))**



Saint Andrew's supports MGLSS in a variety of ways. Many Saint Andrew's members individually support girls in the MGLSS scholarship program with either full or half scholarships. These scholarships are important for the girls to continue their education.

Through our Outreach budget, we provided post graduate scholarships for Maria Sepere and Witness Kivuyo. Maria graduated from Singida Institute of Health and Allied Sciences with her Diploma in Pharmacy. Witness has returned to her university and is in her final year working towards her Diploma in Pharmaceutical Science.

On December 3<sup>rd</sup>, Jason Bergmann, Director of Operation Bootstrap Africa, presented at our Forum, told stories and gave us an update on the work of OBA and MGLSS.

**In 2023, MGLSS operations was supported with \$3,360 from Saint Andrew's Outreach budget. In addition, Saint Andrew's provided \$3,712.50 for post graduate scholarships from that budget.** Also, members donated \$2,524 to provide uniforms for the new Form One class that begins in January.

(For more information visit: <https://bootstrapafrica.org/project/supporting-girls-education/>)

**Kafika House (formerly The Plaster House) – Tanzania**



Kafika House is an organization that provides high care and low-cost surgical health care for children with operable disabilities in Tanzania. 2023 was an amazing journey for Kafika House. This included rebranding to Kafika House, two new locations in Karatu and Moshi, partnering with Kilimanjaro Christian Medical Centre and international travel. They have been building stronger operations and clinical services systems to support their exciting expansion plans, all the while maintaining the focus on the children.



Saint Andrew's joined with Cross of Christ Lutheran Church to host a luncheon at Cross of Christ. Sarah Rejman, Founding Director of the Kafika House, spoke about the changes in the program, answered questions, and encouraged support at the luncheon.

Jean Wahlstrom continues to serve on the Kafika House International Advisory Board.

*continued on page 41*



Kafika House Luncheon

**In 2023, Kafika House was supported by \$3,070 from Saint Andrew's Outreach budget.** Members have provided about \$3,000 of additional support through donations to the church marked for Kafika House.

(For more information visit: <https://kafikahouse.org/>)

## Imagine Housing



Imagine Housing was founded as Saint Andrew's Housing Group in 1987 by members of Saint Andrew's Lutheran Church. The organization builds and develops affordable rental properties and provides supportive services to the residents of these properties. A church member, Carolynn Ferris, serves as president of the Imagine Housing board.

Saint Andrew's is partnering with Imagine Housing to explore the possibility of building affordable housing on part of our property. At the forum on November 12<sup>th</sup>, members of the Task Force, Imagine Housing, and a hired architectural firm presented the current status, preliminary designs and expectations.

**Imagine Housing was supported with \$3,350 from Saint Andrew's 2023 Outreach budget.**

(For more information visit: <https://imaginehousing.org/>)

## PorchLight

(formerly Congregations for the Homeless)



The year 2023 brought many changes, including a name change, to this organization. PorchLight provides a year-round rotating shelter for homeless men, case management, subsidized housing, group homes, and an emergency shelter with a 100 bed capacity. PorchLight continued funding and managing a hotel program housing about 30 men, a Men's Shop for the men to select clothing and shoes from donated items, housing about 50 men in group homes, and opened a new building in June, which is a permanent men's shelter.

Saint Andrew's hosted the rotating shelter in March and September this year. PorchLight needed another church to host in September and we stepped up! The shelter at our church was open from 6:00 pm to 8:00 am. Volunteers dropped off food and supplies and some stayed to serve meals and visit with the men. The Church of Jesus Christ of Latter Day Saints, Bellevue Presbyterian Church, and other churches helped provide meals. We were able to give each of the 17 men a new pair of shoes and a knit hat in March. Several members of our church wrote encouraging notes to the men. Contributions from members of our congregation covered most of the expenses for hosting the shelter. We plan to host the shelter again in June of 2024. Cheryl Jurrus is on the PorchLight support network and would welcome more volunteers to help in June of 2024. Our planning team for hosting the men is Nancy R. Davis, Mark Davis, Linda Willenberg, Kurt Lutterman, and Jay Baxter.

continued on page 42



continued from page 41

During 2023 the Rotating Shelter served 75 clients total and 22 (29%) of those men found housing. This makes the Rotating Shelter a successful transitional program which some call a "Place of Grace." During December, 11 out of the 19 men in the program were employed.

Since moving to the new building in June, PorchLight's Emergency Shelter has served 200 new first-time clients. PorchLight has also hired a new Executive Director, Troy Christensen, and a Substance Use Disorder Professional. "Nearly 50 strong, our staff has grown. One in five are former clients who share their lived experience to connect with clients."

**In 2023 PorchLight was supported with \$4,675 from Saint Andrew's Outreach budget.**

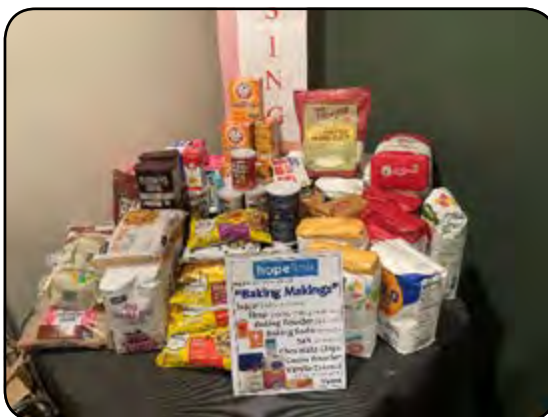
(For more information visit: <https://www.porchlightcares.org>)



## Hopelink/Corner of Blessing

hopelink

**Corner of Blessing:** Each month members donate items in the Corner of Blessing that have been requested for that month by the directors of the Hopelink Food Bank. In 2023 we have donated cereal, baby food, formula and wipes, baking items, sandwich spreads, paper products, picnic/BBQ condiments, hearty soups, and pet food. In October and November, we donated food items to pack into emergency bags. Through the Corner of Blessing, we provided Hopelink with about 2400 pounds of needed items. In addition, members contributed about \$11,000 to support the Hopelink Food Bank.



**Hopelink - Congregation Support Events:** This year we held two events where Saint Andrew's members could provide support for Hopelink. They were:

**SOUPer Bowl of Caring:** On February 12<sup>th</sup>, as part of the SOUPer Bowl of Caring effort, members contributed food items and money to help Tackle Hunger in our area. Members filled 20 crates with donated food items. This provided 544 pounds of food and \$1,000 to Hopelink to help our hungry neighbors.



**No-Cook Emergency Bags:** During the months of October and November we collected food items to pack into No-Cook Emergency Bags. Then during the Advent Fair on November 26<sup>th</sup>, we packed the food into 60 Emergency Bags for Hopelink's Bellevue Food Bank. These No-Cook bags are intended for those without access to cooking facilities (primarily homeless).

(For more information visit: <https://www.hopelink.org/>)

continued on page 43



## Navajo Evangelical Lutheran Mission (NELM) – Rock Point, Arizona



NELM helps with the development of educational, cultural, physical and spiritual well-being among the Navajo. The mission has a 100% Navajo staff. The mission includes the House of Prayer (an ELCA congregation), The Navajo Mission Preparatory School (a K-2 private faith-based elementary school), a clinic, a cultural and spiritual discovery center, a water project (providing clean water to the surrounding Navajo community), the Hózhó Café (providing hot lunches to the neighboring community) and a food bank.

**In 2023, NELM was supported with \$2,700 from Saint Andrew's Outreach budget.** Saint Andrew's also supports NELM through the Box Tops for Education program.

(For more information visit: <https://nelm.org/>)

## KidVantage (formerly Eastside Baby Corner)



Saint Andrew's participated in three special events to support KidVantage this year. In May, our congregation took part in their 9th Annual Diaper Derby helping supply diaper needs to families in our community. Saint Andrew's, with a horse named Dandy Andy, participated in the Belmont Stakes division. We finished third in our division with 4,458 points (2271 diapers, 1440 wipes and \$989.55). KidVantage received 127,215 diapers, 34,904 wipes and \$11,454.11 from the 37 organizations that participated in the Diaper Derby.

KidVantage was one of the two partners we supported through our Christmas in July event. Saint Andrew's provided KidVantage with a wonderful amount of toys, games, books, puzzles, and clothing through this event.

On October 8<sup>th</sup>, Helen Banks Routon presented at our Forum and told us about the work of KidVantage.

On December 2<sup>nd</sup>, a crew of 14 volunteers participated in a work party at KidVantage in Issaquah. The crew was busy prepping items for orders or packing items into bags for orders (Holiday bags). A lot was accomplished and made a big difference for KidVantage at this very busy time.

**In 2023, KidVantage was supported with \$2,200 from Saint Andrew's Outreach budget.** Two of our members, Liz Rudolph and Marie Bean, volunteer weekly at KidVantage.

(For more information visit: <https://kidvantagew.org/>)

## Lutheran World Relief (LWR)



LWR is a non-profit global organization that works with partners to provide solutions to poverty, injustice, and human suffering. Saint Andrew's supports LWR with personal care kits and quilts that members make and send to LWR.

**In 2023, LWR was supported with \$1,775 from Saint Andrew's Outreach budget.** Members donate items to go in personal care kits. In May, Saint Andrew's sent LWR 26 quilts made by Dorcus Circle members and 189 personal care kits assembled by the Health and Wholeness Ministry Committee. In November we sent LWR an additional 25 quilts and 137 personal care kits assembled by the Health and Wholeness Committee with the help of Saint Andrew's Youth Group.

(For more information visit: <https://lwr.org/>)

continued on page 44

continued from page 43

## Lantern Hill – Ensenada, Baja, Mexico



Lantern Hill’s mission is to “break the chains of poverty through education, nutrition and care.” *Linterna del Camino* is the official name in Mexico, which literally translated means Lantern on the Path. Their goals include walking beside students through their education journey, helping to light their way from elementary school to university. Lantern Hill encourages children to stay in school by providing an educational and feeding program three days per week, assisting with tuition fees, uniforms, school supplies, and social and emotional care. Since the beginning of 2020, Saint Andrew’s Outreach team has committed to support this mission and program, after sending a mission team called the “Mexico 12” to serve for a week in July of 2019. Since that time, Saint Andrew’s Member Shana Nielsen has joined the Lantern Hill board of directors.

This fall, Lantern Hill purchased a new building just down the street from their yellow school. Plans for this new building include a safe place to play and additional classrooms. There are now 100 “kids”, ranging in age from 4 to 24, supported by Lantern Hill. There are 9 students in university, one who has just started dental school and one who is finishing up law school.

In February 2024, Abby Williams, Director of Lantern Hill, will be coming to share her story of what love built, and how people can help to build more love in the way of educational support.

**In 2023, Lantern Hill was supported with \$2,875 from Saint Andrew’s Outreach budget.**

(For more information visit: <https://www.friendsoflanternhill.org/>)

## Congregations for Kids



On August 9<sup>th</sup> nine volunteers from Saint Andrew’s prepped 1,000 backpacks for the Congregation for Kids annual back-to-school operation. The backpacks needed to be unpacked from the shipping boxes, taken out of the protective plastic bags, have the tags removed, and organized by grade level for filling. Congregations for Kids provides new backpacks and school supplies for needy children in the Bellevue School District. These backpacks are provided to the students in the free and reduced lunch programs.

**In 2023, Congregations for Kids was supported with \$330 from Saint Andrew’s Outreach budget.**

(For more information visit: <http://congregations4kids.org/>)

## Love Tree



This year the Saint Andrew’s congregation made a wonderful difference for members of our community. The Love Tree effort was coordinated by Jan Bowerman, Joyce Arnold, Jay Baxter, and Sherry Grindeland. Christmas was made brighter for neighbors in our community through our donations to our partners: for KidVantage more than 100 toys, books, games, puzzles, and stuffed animals were donated that filled three bins full

of wonderful and much needed items! For The Sophia Way, 34 gift cards were donated and will be given to women – many of them homeless. And for Bridge Disability Ministries, twelve individuals were “adopted” by congregation members who, using wish lists from the clients, purchased and wrapped holiday presents.



Thank you for your continued generosity and support for these members of our community.

continued on page 45

continued from page 44

## Day of Service

On Saturday, May 6<sup>th</sup>, as part of the 2023 Day of Service, a crew of 21 volunteers from Saint Andrew's put in a morning of a lot of hard work. The crew was helping Charlotte, a 90-year-old widow, clean up her property in the Sammamish area. The team was busy raking and hauling leaves, cutting and hauling branches, cutting and trimming grass, and a lot of other yard tasks. In addition to the hard work, all enjoyed the time of service and fellowship.

## Lutheran Disaster Response (LDR)

Lutheran Disaster Response is an organization whose purpose is to share God's hope, healing, and renewal with people whose lives have been disrupted by disasters in the United States and around the world. Saint Andrew's doesn't support LDR as part of its regular outreach budget. On three occasions in 2023, events occurred that Saint Andrew's used money from the New Opportunities fund to provide support to LDR. On February 6<sup>th</sup> two earthquakes hit Turkey devastating parts of both Turkey and Syria. We sent \$1,000 to LDR to help the people affected by these quakes. In August, wildfires in Hawaii destroyed homes, businesses, and lines of communications. We sent \$1,000 to LDR to support those impacted by these fires. Then in November, as the violence in Gaza and Israel continued and thousands of innocent civilians were caught in the middle, we sent \$1,000 to LDR to provide humanitarian aid to these civilians impacted by this violence. Members have provided about \$1,500 additional support to LDR for these disasters.

continued on page 46





continued from page 45

## Christmas in July

Saint Andrew's celebrated Christmas in July as a way to support children in need through two of our mission partners: KidVantage and Lantern Hill. These two organizations were (and are) in great need of our support to meet the needs of the children they help. The people of Saint Andrew's made this event a great success for both organizations. Members provided \$5,255 for the ongoing work at Lantern Hill. For KidVantage, over 300 new toys, games, books, crafts, and stuffies plus 38 pieces of new clothing and coats were donated. In addition, members donated many, many used items that will be gratefully reused.

## Safe Place



Saint Andrew's is a "Safe Place" site. Any youth aged 11-17 who is in immediate need of help and/or safety can come to Saint Andrew's. We will make the youth comfortable and contact Safe Place, who will respond immediately to provide the youth with the services they need.

There are many other organizations that Saint Andrew's supports and helps through Outreach and Servant Ministries. We provide in kind support by providing office space to the Eastside Pathways organization. Some of the other organizations supported through our church members' stewardship for 2023 were: Compass Housing Alliance, Friends of Youth, Pacific Lutheran University, UW Campus Ministry, Holden Village, Lutheran Community Services, Eastside Interfaith Social Concerns Council, Samaritan Center of Puget Sound, LifeWire, and Eastside Legal Assistance Program.

Submitted by  
Dick Szabo, Chair  
Outreach and Servant Ministries Committee



Tiny Home Build with Mt. Si and Sammamish Hills Lutheran Churches





# Stewardship Committee

## Participants

Kit Bowerman, Chair  
Ed Corker

2 Corinthians 9:6.

*"The point is this: whoever sows sparingly will also reap sparingly, and whoever sows bountifully will also reap bountifully."*

The 2023 Stewardship campaign started this past summer. Letters for *the VOICE* contained information regarding the importance of our financial giving, as well as time and talent. Letters were included monthly until Stewardship Sunday in November. In September, stewardship was the main topic for the Adult Discipleship/Education Hour Forum. During that time, committees such as Worship and Liturgical Arts, Building and Property, Outreach, and Health and Wholeness educated those who attended about how their committees are involved in our community (both local and international), and extended the invitation to join their group. The speakers were well received, and the programs were very informational. Thanks go out to those individuals who participated in those forums.

The pledge cards that were sent out to the members of Saint Andrew's had two parts. One was for the financial tithe, and the other was for the opportunity to join one or more active committees that our church is engaged. If you still haven't made your pledge, or misplaced your pledge card, you can make your pledge online, or you can pick up a pledge card in the Narthex near the elevator (or ask in the office.) It is never too late to make a pledge.

The two members of the Stewardship Committee in 2023 were Kit Bowerman and Ed Corker. I want to thank Ed for his input and Susan Hegedus for her help in this endeavor.

Respectfully,  
Kit Bowerman, Chair  
Stewardship Committee



Stewardship:  
We offer ourselves to God



Tiny Home Build  
with Mt. Si and  
Sammamish Hills  
Lutheran Churches



May Holden Youth Weekend

# Acolyte Order of St. John (OSJ)

The Order of Saint John is the acolyte organization here at Saint Andrew's.

- † Our members are young men and women in the grades 5 through 12.
- † Our primary objective is to provide and equip young people to assist with the worship services of our church.
- † Another objective is to encourage these young people to be actively involved with the work and operation of the church.
- † We gather five times a year, in the odd months (except July), usually on the 3<sup>rd</sup> Sunday.
- † The group is youth run. The officers plan and run the meetings. The officers and the members carry out the tasks of this group.

## Participants

Jack Brennan  
 Zoe Elien  
 Alex Engan  
 Philip Gustafson  
 Samuel Gustafson  
 Melanie Grad  
 Soren Lester  
 Avery Laub  
 Sonja Wetmore

Looking back, here are some highlights of 2023:

- † The officers that led the group for 2023 were: Sonja Wetmore as Provost and Zoe Elien as Sacristan.
- † During 2023 we had five new members join the group. These new members are: Jack Brennan, Philip Gustafson, Samuel Gustafson, Melanie Grad, and Avery Laub.

Looking forward to 2024:

- † Officers for 2024 will be elected at our meeting in January.

We will recognize the acolytes who serve here at Saint Andrew's during one of our worship services. At that time, we will install the officers for 2024.

Dick Szabo, Chaplain  
Acolyte Order of Saint John



Recognition of Acolytes



# Altar Guild

The Altar Guild serves the congregation by preparing the holy sacraments and many of visual queues within the Sanctuary. Members care for the sacraments including the communion wares and the baptismal font. We set the altar with candles, flowers, paraments (altar hangings), and banners according to the church season calendar. The Easter flower cross and Christmas decorations during the Advent season are also visible contributions this groups makes to our worship services. Typically, we work as two member pairs to prepare and clean up the services. We continue to offer individual servings for gluten free.

Each member serves between 4-8 Sundays depending on their availability. Altar Guild is always looking for new members. This is a meaningful ministry where individuals, couples, and families can serve behind the scenes. We meet three times a year (January, May, and September). The weeks where members serve typically take about 90 minutes split across setup on Saturday and rotation/clean up on Sunday.

## Participants

Bev Anderson  
Jay Baxter  
Jan Bowerman  
JoAn Eklof  
Karin Eklof  
Emily Elien  
Malinda Elien  
Zoe Elien  
Carolynn Ferris  
Hal Ferris  
Johannes Grad  
Melanie Grad  
Christine Koch  
Phillip Misner, Chair  
Hillary Nordwell  
Joshua Santjer  
Margaret Santjer



Please contact us if you would like to join or learn more!



Advent Fair



# Dorcas Circle

Dorcas Circle is committed to the Saint Andrew's Mission Statement: *Growing Together in Christ to Love and Serve All People*. For over 65 years Dorcas Circle has made quilts for Lutheran World Relief and local charities and supported Compass Housing Alliance.

- Participants**
- Bev Anderson
  - Diane Hogle
  - Helen Ryan
  - Dianne Chong
  - Judy Johnson
  - Ruth Taus
  - Ruth Ann Dodge
  - Ann Leamer
  - Linda Willenberg, Chair
  - Janell Erickson
  - Dianne Lee

## Highlights of 2023

Donating 51 quilts to Lutheran World Relief and one quilt for a free-will raffle to support Lutheran World Relief.

Collecting and donating socks, warm hats, undershirts, underwear, gloves, and toiletries to Compass Housing Alliance.

## Looking forward to 2024

Dorcas Circle will continue to meet on the First Tuesday of every month from 9:30 am until 12:30 pm to sew and assemble quilts. All members and friends of Saint Andrew's are welcome to attend our meetings.

You can also support Dorcas Circle by cutting 11-inch squares for us, donating sheets for quilt backings, sewing quilts at home, and donating toiletry items, socks, hats, gloves, underwear, and toiletries for Compass Housing Alliance.

Linda Willenberg, Chair  
Dorcas Circle



Quilt Blessing





# Housing Task Force

The City of Bellevue is facing a crisis in the supply of housing affordable to a significant portion of our community. Bellevue is one of the most expensive cities to own or rent a home. Current estimates show approximately 14,000 new housing units affordable to families earning less than 80% of Area Median Income (\$98k/yr) will be needed in the next 20 years.

In response to this crisis the City of Bellevue in 2023 made changes to the zoning to encourage the development of affordable housing on land owned by faith-based organizations. As a result, the Congregation Council of Saint Andrews Lutheran Church formed a task force to explore the development of affordable housing on underutilized land on the east side of Saint Andrew's property. The task force is made up of Carol Schneider, Kit Bowerman, John Nelson, Stephanie Page Lester, Kurt Lutterman, Dick Lee, and Hal Ferris who is the chair of the task force.

The Task Force reached out to Imagine Housing to prepare a concept plan to demonstrate the size and location of a residential building that would be affordable to families and financially feasible. On November 12, the Task Force held an adult forum to share and discuss the opportunity to work with Imagine Housing to develop affordable housing on Saint Andrew's property. A concept design with approximately 100 units in a four-story building was prepared by Third Place Design Cooperative to inform discussion with the congregation. The building would sit on the land adjoining the east side of the parking lot and would visually rise 2 stories above Saint Andrew's entrance on its west elevation.

The questions and answers from the adult forum, the recording of the forum and the concept plans are all posted to the church website: Visit <https://salc.church/housing-project>

In addition, the Task Force has held listening posts in the Fellowship Hall after Sunday service during the month of December and January to help inform the congregation and hear concerns individuals may have.

## Questions

Many questions have been asked and answered, however the most frequently asked questions are as follows:

What are the **characteristics of the residents** for the proposed apartments?

The residents will be families with household incomes between \$38k and \$85K per year depending on family size. Jobs that fall into those wage ranges include; administrative support, retail / sales, transportation / moving, food prep / serving, education / library, construction, and health services. For our purposes "Families" include families with children, seniors, individuals, and other non-traditional families. Full time students would not be eligible under affordable housing financing guidelines.

## Participants

Carol Schneider  
Kit Bowerman  
John Nelson  
Stephanie Page Lester  
Kurt Lutterman  
Dick Lee  
Hal Ferris, Chair

*continued on page 52*

*continued from page 51*

### Will Saint Andrew's retain **parking** to serve the congregation?

Saint Andrew's currently has approximately 175 parking stalls including the handicap stalls on the west side of the music room. Average Sunday attendance has recently been 115 people with approximately 70 cars. The maximum capacity of the sanctuary is 330 people. Peak attendance on two days a year, Christmas Eve and Easter, has been at or close to capacity as recently as 2019. The Christmas Eve service in 2023 had 225 people attend. The parking demand for Christmas Eve and Easter can be 120 to 140 cars with larger families coming together in the same car.

Depending on the layout of the apartment building, Saint Andrew's will retain between 110 and 135 parking stalls. This will provide parking capacity for 250 to 300 people.

Saint Andrew's has benefited from a cooperative shared parking agreement with the Latter-Day Saints (LDS) church next door. When Saint Andrew's has parking demand exceeding our capacity, the LDS church has provided access to their 90-stall parking lot across the street. Saint Andrew's has been reciprocal in providing access to Saint Andrew's parking for large events hosted by the LDS church.

The task force has reached out to the LDS church and has confirmed continuing the reciprocal parking relationship the churches have shared in the past.

The proposed apartment building will have their own parking located in a level below the apartments. The residents and visitors of the apartments will not have access to Saint Andrew's parking without specific permission from Saint Andrew's. Additional or shared parking opportunities between Saint Andrew's and Imagine Housing will be explored in the second phase of design. If Saint Andrew's elects to move forward with an affordable housing project.

### Will Saint Andrews **sell or lease the property** to be used for affordable housing?

The final structure for the real estate transaction has not been finalized. Possible options include subdividing the property and selling a portion, leasing the land in a long-term ground lease, or dividing the land through a condominium agreement and selling the land that is part of the condominium. Andrews Glen, Velocity, and 30 Bellevue, all projects completed by Imagine Housing, as well as other similar projects have utilized the condominium structure.

A condominium structure allows Saint Andrew's to receive fair market value for our land, minimize any financial or operating liability, and maintain control on how the property is developed and maintained. A condominium agreement stipulating the terms and conditions required by Saint Andrew's is recorded on the title at the time of the land sale.

A long-term ground lease or sale after subdividing the property do not provide the same benefits to Saint Andrew's as compared to the condominium structure.

### How does an affordable housing project **benefit** SALC.

First and foremost, making land not used by Saint Andrew's available to respond to the critical need for affordable housing in our community is a Christian response consistent with our congregation's active and long-term commitment for affordable housing. Imagine Housing was started by Saint Andrew's 30 years ago and many members of our congregation have served as volunteers and leaders of Imagine Housing and in our community focused on affordable housing.

Second, Saint Andrew's is not expected to give our land away. Saint Andrew's should receive fair market value for its land. The sources of financing for affordable housing projects anticipate the not-for-profit developer will need to purchase the land for the project.

*continued on page 53*

continued from page 52

Third, having new families next door provides opportunities for engagement, friendships, and collaboration.

## In Conclusion

The following prayer has opened many of our services recently, “you have revealed ways of justice, yet we fail to follow you. **We are afraid to risk what we have for the sake of helping others.** For the harm we have caused, for the unjust demands we place on others and your creation, and for the ways we turn away from you and our neighbor, forgive us. Lead us back to you and set us on the right path, in the name of Jesus Christ, our Savior. Amen.”

Our Offertory Prayer reads “We return these gifts to you, O Lord, out of the bounty you have given us. May our resources - our time, our talent, our power, our privilege, and our money, be used for the good of all, as a sign of hope for the future you have promised. Amen.”

## What is next?

The next step is to ask the congregation by a vote in the January 2024 annual meeting if we as a congregation want to proceed in developing housing affordable for families and individuals on the east side of Saint Andrew’s property and authorize the Congregation Council to negotiate and execute a non-binding Memorandum of Understanding (MOU) with Imagine Housing to develop and operate the housing.

Final approval of a schematic design plan, the condominium agreement, and the purchase and sale agreement for the land will be asked of the congregation at a later date assuming the congregation approves the motion to proceed at the annual meeting.

# JEDI Group (Justice Equity Diversity and Inclusion)

The Reconciling Team (LGBTQ+ Inclusion Group) and Racial Justice Group combined forces to create the JEDI Group.

JEDI stands for Justice, Equity, Diversity and Inclusion.

At the Group’s April 2023 meeting, we adopted the following statement:

*At Saint Andrew’s we take our mission statement seriously- “to Love and Serve All People”. Saint Andrew’s stands in support of BIPOC (Black, Brown, Indigenous, and other People of Color) and LGBTQIA+ (Lesbian, Gay, Bisexual, Transgender, Queer, Intersex, Asexual, Plus) communities.*

*Recognizing the systemic racism, racial inequality, homophobia, and transphobia in our community and nation, we acknowledge that we cannot remain silent, nor can we sit idly by. Remaining silent only contributes to injustice.*



### Participants

Mary Davis  
Malinda Elien  
Tom Getzinger  
Sherry Grindeland  
Maria Harwell  
Anna McLeod  
Becca Piel  
Dick Swaisgood, Chair  
Debbie Szabo  
Dick Szabo  
Michele Vossler  
Christine Zomorodian

continued on page 54

continued from page 53

The group set up a lending library of books about these issues in the Narthex.

Borrow a book – it’s an honor system – read it and return it.

JEDI hosted an Adult Education/ Discipleship Forum in March, discussing the film “Roosevelt High School: Beyond Black & White”, a documentary about race and education based on the experiences of Seattle’s Roosevelt High School students, yesterday and today. We continue to plan Forums for future dates.

We also created the initial design of an outdoor welcome banner on the corner of 148th Avenue SE and SE 28th Street and collaborated on the final version.



JEDI Group Book Exchange

## Reception Support Team Formerly Memorial Reception Team

Memorial Celebrations of Life are a part of the ministry at Saint Andrew’s Lutheran Church. Families are invited to gather in our Fellowship Hall for a reception following a Memorial Service or a Committal Service.

The Reception Support Team graciously supports families through service as hostesses at receptions following a Memorial or Committal Service. Each reception is hosted by a team of two, sometimes three hostesses. If a reception is catered, the Reception Support Team is available to help with the buffet set up and provides coffee, tea, cold water and lemonade for guests. This gracious team of volunteers also transforms Fellowship Hall into a warm, welcoming, and inviting space for family and friends to share a meal and memories.

These faithful servants also provide reception support help for NWWA Synod events. They are reliable, supportive, good humored and share a great friendship. If this ministry feels like a place for you, we invite you to join the team and help in hosting receptions/events that greatly help families of those who have lost loved ones as well as assisting in ELCA Synod events.

Contact Mary Mills in the church office if you would like to be part of this dedicated group, just let us know and we can add your name to the list of volunteers.

Mary Mills  
Reception Support Team Coordinator  
Saint Andrew’s Office Administrator

### Participants

- Jay Baxter
- Lois Eckley
- Janell Erickson
- Mary Mills, Coordinator
- Joyce Nelson
- Mikel Oswalt
- Linda Willenberg



## Men's Ministry/Tuesday Morning Men (TMM)

Our group meets every Tuesday morning at 8:30 am for fellowship, study, and prayer. At the start of the pandemic, we moved from an in-person meeting to a virtual meeting on Zoom but we have continued to meet virtually because it allows people to join from home, from the office, or while traveling, (no commute or dress code required). It is easy to join in at any point because we both read and discuss the material we are covering in the meeting (no homework required). Our focus for study is the Bible or a book with a spiritual connection. This year included finishing up "Paddling up Mountains", a guide for congregational leaders navigating new challenges, reading through the entire book of Acts, along with theological and historical commentaries, and "The Gift of Years: Growing Older Gracefully", a book of essays on the spiritual challenges and opportunities in the "second stage of life".

We regularly take time to discuss the needs of the congregation and how we can support each other in a variety of projects and programs. In 2023 our group responded to a request from Operation Bootstrap Africa to help kickstart a farm project at the MaaSAE Girls Lutheran Secondary School (MGLSS) in Tanzania to grow both food and cash crops. We are happy to report that many others, beyond TMM, added their support, the program received the funding needed for 2023, and it had a very successful first year! It was also the subject of a recent Sunday adult discipleship/education hour forum. Thank you to everyone who contributed and please continue to support and pray for the farm program at MGLSS.

Finally, our group was hit hard this year by the unexpected passing of Dick Swaisgood, a long-time core member and leader in the Saint Andrew's congregation and Tuesday Morning Men. The support and guidance he gave the group and many of us individually over the years, along with his consistent positive attitude, will be greatly missed. He was, and will always be, an inspiration to all of us as an example of a Spirit-filled life well lived in the service of others. The picture below was taken at a group breakfast hosted by one of our members in 2022.



In 2024 we are looking forward to continuing to bring in new members and adding additional fellowship opportunities, outside of our regular weekly meetings, including restarting our annual fall retreat (fishing and ball games have also been mentioned).

<https://salc.church/portfolio/mens-ministry>

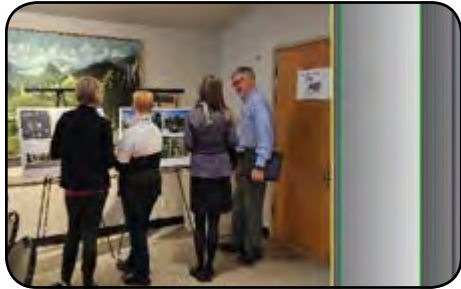
<https://salc.church/portfolio/tuesday-morning-men>

Submitted by Mark Davis, TTM Member

# Imagine Housing



It's been a year of transitions and preparing for Imagine Housing's next stage of growth, and we are grateful for your continued involvement in supporting community that connects people and allows everyone to thrive together.



Our newest community under development, Samma Senior Apartments saw some real progress in 2023, and toward the end of the year gained a new floor every week. We look forward to opening this community in mid 2024, which will provide 76 affordable apartment homes in Bothell for seniors aged 55 and over and who are at or below 50% of the Area Median Income (AMI).

In November, we gathered together with local leaders and housing advocates, including members of Saint Andrew's Lutheran Church, for a celebration of innovative approaches for the creation of more attainable housing. We are excited to explore the opportunity that C-1 Affordable Housing Density Bonus presented for Saint Andrew's Lutheran Church.



We are still busy compiling and analyzing all of our data from 2023. So far, we can tell you that Imagine Housing Case Managers provided 5,101 direct in-person case management hours, and organized a total of 400 community events for residents at Imagine Housing. Here is what some of those events looked like:



2024 will be an exciting year for Imagine Housing, and we're excited to share it with you. Thank you for ALL you do to support Imagine Housing!

With gratitude,  
Imagine Housing

*Founded in 1987 (as St. Andrew's Housing Group) by members of Saint Andrew's Lutheran Church, Imagine Housing's mission is to develop affordable housing, build welcoming communities, and foster vibrant futures. By developing permanent affordable rental homes in East King County and offering individualized support to allow each resident to pursue and achieve their goals, Imagine Housing provides low-income individuals and families a home to live near their jobs, good schools, transportation, and health services.*

# Samaritan Center of Puget Sound Counseling



2023 has been a year rife with developments fomenting uncertainty, insecurity, and stress. There is no shortage of examples: the increasingly mind-numbing everydayness of unapologetic lawlessness, much going unreported, coupled with frustrations around law enforcement and judicial permissiveness. Merciless unchecked carnage and destruction by militaries abroad or inflation and recession fears at home, all amidst escalating needs and declining resources. The seemingly inexorable ravages of climate change gradually threatening to upend everyday life. The explosive spread of generative AI (artificial intelligence) through platforms such as Chat GPT or Bard with unprecedented unregulated powers to create, deceive, heal, and destroy. Data breaches at not only our financial, health insurance, credit rating, and even cybersecurity companies, but also at some of the highest levels of government, exposing personal and national secrets. Pandemic levels of loneliness and cynicism. The collapse of trust in centuries-old institutions and social conventions. Adding to the uncertainty in society is the continued blurring of boundaries, e.g., boundaries between right and wrong, fact and fiction, healthy and unhealthy, legal and illegal, etc.

Such macro level environmental stressors are piled on top of the micro level stressors people already struggle in their daily lives to cope with regarding finances, health, relationships, or work. Because more stressors exacerbate preexisting risk for the expression of mental disorders, the need for mental health resources continues to grow. Resources such as counseling or psychotherapy help to lower risk during periods of increased risk while also helping to manage, ameliorate, or resolve problems.

For several decades Saint Andrew's Lutheran Church has generously hosted the Samaritan Center of Puget Sound counseling office, which has served large numbers of people primarily from the Eastside, but also from King, Pierce, and Snohomish counties, and even other states and countries. Although the big majority of folks seeking counseling are English-speaking, some are Chinese- or German-speaking. The counseling office here continues to serve underserved people from marginalized groups, internationals from around the globe, tech executives, Christians, agnostics, and atheists who sometimes begin to ask unprecedented spiritual questions.

Established in 1960 with offices throughout Puget Sound, the Samaritan Center of Puget Sound is one of the oldest and largest Christian counseling organizations in the country. Although like most psychotherapists locally I, too, am difficult to schedule with, I would be happy to assist in finding a referral to a colleague on our staff who might be available: 206-957-4708. Otherwise, please call our main office at 206-527-2266 and press 1 to reach our administrative staff who could help with referrals or scheduling.

It is certain 2024 will not be without uncertainties. But the words of Jesus this New Year are as powerfully true as last year and untold centuries before:

*"I have told you these things so that in me you may have peace. In this world you will have trouble. Take heart. I have overcome the world."* John 16:33 NIV

Wishing our Lord's favor and protection on you this New Year, dear people of Saint Andrew's!

Neal Teng, Ph.D.

Samaritan Center of Puget Sound





Women's Retreat hosted by Saint Andrew's and Our Savior Lutheran of Issaquah



Blessing for Pastor Joel Nangole



Volunteer Day at KidVantage



Root Beer Float Sunday





Western States Youth Gathering



Recognition of Graduates



Community Easter Festival



Community Trunk or Treat Event



# Finance Committee / Treasurer

## Mission:

*Responsible for the proper conduct of fiscal matters of the congregation and preparation of appropriate financial reports for review and approval by the Congregation Council.*

## Budget and Current Fund:

2023 was a year of financial stability for our church. Income year over year remained relatively flat while we were able to maintain good control of church expenses. We finished 2023 with \$313,000 in cash and investments which is about 4 months of operating expenses. We are very blessed to remain in a stable financial condition given the environment today. While our current fund contributions were slightly below our budget forecast we spent less than anticipated as well, mostly due to the lower than budgeted staff expenses and lower spending across most other church expenses. This included not using budgeted funds for an accounting assistant. This critical church function continued to be covered by a dedicated group of volunteers in 2023. The year ended with \$2,800 of income greater than expenses. The total current fund income was \$785,000, roughly the same as 2022 when adjusting for 2022 income which included Paycheck Protection Funds. In preparation for the 2024 budget, the Finance Committee reviewed pledged income as well as historical trends. We do anticipate contribution income and building use fees will be slightly higher in 2024.

Achieving our budgeted income amount is dependent on an increase in contributions from our members as well as demand for our building usage. With the continued blessings from God, we were able to recommend a 2024 budget allowing Saint Andrew's to fulfill our core missions!

The 2024 expense budget is roughly flat compared to 2023. We eliminated budget for an accounting assistant allowing for stability in current church staffing levels. We are able to fund all critical aspects of church life including benevolence which, in total, amounts to greater than 10% of church income. In addition to the Current Fund, the Finance Committee will continue our oversight of all other funds managed by the church. This includes our Reserve Fund with a current balance of \$178,000. We also monitor the Maintenance Reserve Fund with a current balance of \$12,000.

## Finance Committee Goals for 2024:

- † Maintain solid financial conditions to support our ministries.
- † Assist the Congregation Council/Executive Committee and budget owners in management and monitoring of the operating budget and use of designated funds.
- † Continued transparency and communication on financial matters.
- † Ensure the finance policies are up-to-date and ready to ensure protection of our mission

Thanks to all for your support and contributions during the year!

The Finance Committee Team

### Participants

Bill Bruggemann – Treasurer  
 Brady Kasper, Chair  
 Dick Szabo, Council Liaison  
 John Andresen  
 Joni Barrott  
 Juliet Zhang, Council Liaison  
 Matt Camrud

# Financial Reports

## Balance Sheets

### SAINT ANDREW'S LUTHERAN CHURCH

#### Balance Sheets

As of December 31, 2023 and 2022

	<u>2023</u>	<u>2022</u>
<b>ASSETS:</b>		
Cash and cash equivalents	313,520	249,301
Imagine Housing Social Impact Bond	25,000	25,000
Accounts receivable	-	2,185
Land, building, equipment	<u>5,016,800</u>	<u>4,331,400</u>
<b>TOTAL ASSETS</b>	<u><u>5,355,320</u></u>	<u><u>4,607,886</u></u>
<b>LIABILITIES:</b>		
Other withholding	<u>3,011</u>	<u>449</u>
<b>TOTAL LIABILITIES</b>	<u><u>3,011</u></u>	<u><u>449</u></u>
<b>FUND BALANCES:</b>		
Youth Ministry	12,404	11,637
Memorial	5,239	5,595
Maintenance Reserve	11,637	11,637
Memorial Garden	74,065	74,411
Pastor's Emergency/Discretionary	900	900
Restricted	15,922	35,179
Reserve Fund	186,575	107,106
Berner Scholarship	3,116	3,166
Continuing Education	651	1,046
Property	<u>5,041,800</u>	<u>4,356,760</u>
<b>TOTAL FUND BALANCES</b>	<u><u>5,352,309</u></u>	<u><u>4,607,437</u></u>
<b>TOTAL LIABILITIES AND FUND BALANCES</b>	<u><u>5,355,320</u></u>	<u><u>4,607,886</u></u>



# Statement of Income and Expenses

## SAINT ANDREW'S LUTHERAN CHURCH

### Statement of Income and Expenses

As of December 31, 2023 and 2022

	2024	2023		2022	
	Budget	Budget	Actual	Budget	Actual
<b>INCOME:</b>					
Pledges plus Tithe commits	453,350	431,884	476,055	563,270	527,125
Pledges (post-publication)					
Giving in excess of pledges					
Estimated contributions, other	272,650	318,116	251,422	197,666	214,036
<b>Contributions</b>	<b>726,000</b>	<b>750,000</b>	<b>727,477</b>	<b>760,936</b>	<b>741,161</b>
<b>Other sources:</b>					
Plate offerings	2,000	3,000	1,570	700	2,728
Building use fees	50,000	30,000	40,130	30,000	26,940
Investment income	14,000	9,000	11,365	200	(425)
PPP Loan Transfer			-	37,354	37,354
Special offerings	8,000	8,000	5,172	8,000	5,990
<b>TOTAL INCOME</b>	<b>800,000</b>	<b>800,000</b>	<b>785,714</b>	<b>837,190</b>	<b>813,748</b>
<b>EXPENSES:</b>					
Salaries	386,052	391,777	381,681	437,354	432,010
Benefits	151,329	152,313	150,924	154,600	153,324
Programs	18,010	22,079	12,490	23,700	18,713
Property	162,012	147,570	154,174	135,292	121,028
Supplies	11,551	10,115	12,133	8,000	9,962
Mission Partners	64,000	64,000	63,470	66,750	64,900
Communications	3,103	4,938	3,693	3,494	2,109
Other	3,943	7,208	4,359	8,000	7,014
<b>TOTAL EXPENSES</b>	<b>800,000</b>	<b>800,000</b>	<b>782,924</b>	<b>837,190</b>	<b>809,060</b>
<b>EXCESS INCOME (EXPENSES)</b>	<b>-</b>	<b>-</b>	<b>2,790</b>	<b>-</b>	<b>4,688</b>

# 2024 Proposed Current Fund Budget—Mission Partners

**SAINT ANDREW'S LUTHERAN CHURCH**  
**2024 Proposed Budget**  
**MISSION PARTNERS**

<b>MISSION PARTNERS:</b>	<b>2023 Budget</b>	<b>2024 Budget</b>	<b>Percent</b>
Backpack Meals for Kids	480	480	100%
Campus Ministry / ELCA	100	100	100%
Compass Housing Alliance	900	900	100%
Congregations for Kids	330	330	100%
Eastside Interfaith Social Concerns Council (dues)	50	50	100%
Eastside Legal Assistance Program	650	650	100%
ELCA Global Mission	860	860	100%
Friends of Youth	750	750	100%
Holden Village	670	670	100%
Imagine Housing	3,350	3,350	100%
KidVantage (formerly EBC)	2,200	2,200	100%
Lantern Hill	2,875	2,875	100%
Lifewire (formerly EDVP)	2,150	2,150	100%
Lutheran Community Services	330	330	100%
Lutheran World Relief	1,775	1,775	100%
MaaSae Girls School Scholarship	4,050	4,050	100%
MaaSae Girls School	3,360	3,360	100%
Navajo Lutheran Mission	2,700	2,700	100%
New Opportunities	3,825	3,425	90%
NW Washington Synod Mission Support	19,175	19,175	100%
Pacific Lutheran University	670	670	100%
Plaster House	3,070	3,070	100%
Porchlight	4,675	5,075	109%
Samaritan Center of Puget Sound	330	330	100%
The Sophia Way	4,675	4,675	100%
<b>TOTAL</b>	<b>64,000</b>	<b>64,000</b>	

# 2024 Proposed Current Fund Budget

	2023 Budget	2023 Actual	2024 Budget	Budget Change
<b>INCOME</b>	<b>800,000</b>	<b>785,714</b>	<b>800,000</b>	
<b>EXPENSES</b>	<b>800,000</b>	<b>782,924</b>	<b>800,000</b>	
<b>EXPENSE Detail</b>				
<b>SALARY &amp; WAGES</b>				
Staff Salary & Wages	368,457	381,181	386,052	17,595
Accounting support	23,320	500		(23,320)
<b>TOTAL STAFFING EXPENSES</b>	<b>391,777</b>	<b>381,681</b>	<b>386,052</b>	<b>(5,725)</b>
<b>BENEFITS</b>				
Health Insurance	49,581	50,923	52,571	2,990
Health Benefits	1,200	1,200	1,200	
Savings Plan	17,412	19,306	19,990	2,578
Housing Allowance	32,450	32,450	33,000	550
Employment Taxes	48,370	44,452	41,808	(6,562)
Continuing Education Staff	1,000	740	840	(160)
Payroll Processing	2,300	1,852	1,920	(380)
<b>TOTAL BENEFITS</b>	<b>152,313</b>	<b>150,923</b>	<b>151,329</b>	<b>(984)</b>
<b>PROGRAMS</b>				
Reconciling Works	500	500	500	
Worship and Music*	14,300	9,739	9,800	(4,500)
Education*				
Faith Stepping Stones	200			(200)
Sunday Church School	575	356	375	(200)
Vacation Bible School*				
Cornerstone/Confirmation	200	211	500	300
Adult Education/forums	1,200	100	1,250	50
Stewardship	500	114	500	
Youth*	504	177	2,025	1,521
Dorcas*				
Outreach	100			(100)
Inreach Fellowship	1,200	1,087	1,200	
Community events			750	750
Women's Ministry	150		150	
Men's Ministry*	150			(150)
Cong. Ministries Resources	2,500	207	960	(1,540)
Health & Wholeness*				
<b>TOTAL PROGRAMS</b>	<b>22,079</b>	<b>12,491</b>	<b>18,010</b>	<b>(4,069)</b>

\*NOTE: These budget items have funds held in "restricted accounts" that have been donated specifically for this purpose. Council has requested that restricted funds be used before adding to the Current Fund budget.



# 2024 Proposed Current Fund Budget

	2023 Budget	2023 Actual	2024 Budget	Budget Change
<b>UTILITIES AND FUEL</b>				
Natural Gas	6,090	6,634	7,012	922
Waste Disposal	3,786	3,821	4,158	372
Electricity	10,619	10,600	11,147	528
Water and Sewer	21,635	27,954	22,246	611
Telephone	13,872	9,787	10,620	(3,252)
<b>MAINTENANCE</b>				
Buildings-Maintenance	6,400	6,120	6,300	(100)
Grounds-Maintenance	10,110	11,360	12,384	2,274
Building Systems	4,855	7,635	6,220	1,365
Office Equipment - Maint.	12,995	13,095	13,127	132
Safety Equipment - Maint.	9,200	10,047	11,230	2,030
Building A/V	200	11	200	
Janitorial	32,568	31,505	32,568	
Major Maintenance Reserve				
Insurance	14,640	14,286	15,300	660
Computer System Maint.	600	1,319	9,500	8,900
Van Operation and Maint.				
Miscellaneous Property				
<b>TOTAL PROPERTY</b>	<b>147,570</b>	<b>154,174</b>	<b>162,012</b>	<b>14,442</b>
<b>SUPPLIES</b>				
Office - Supplies	3,500	4,770	5,151	1,651
Office - Postage	2,700	2,202	2,153	(547)
Office - Bulk Postage	975	790	310	(665)
Altar	720	710	645	(75)
Fellowship - Supplies	1,320	2,592	2,536	1,216
Custodian - Supplies	900	1,069	756	(144)
<b>TOTAL SUPPLIES</b>	<b>10,115</b>	<b>12,133</b>	<b>11,551</b>	<b>1,436</b>
<b>TOTAL Mission Partners</b>	<b>64,000</b>	<b>63,470</b>	<b>64,000</b>	
<b>COMMUNICATIONS</b>				
Advertising	600	266		(600)
On-Line Resources	1,510	1,505	1,075	(435)
Web Page	1,768	1,922	2,028	260
Printing, Outside	1,060			(1,060)
<b>TOTAL COMMUNICATIONS</b>	<b>4,938</b>	<b>3,693</b>	<b>3,103</b>	<b>(1,835)</b>
<b>OTHER</b>				
Licenses & Permits	500	75	50	(450)
Honoraria	1,100	1,250	1,100	
Mileage Expense	110	110	113	3
Conventions & Meetings	500	45	50	(450)
Bank Service Charges	2,448	1,020	530	(1,918)
Staff Develop-Workshop/Mtg	450			(450)
Pastoral Resources	900	659	900	
Continuing Education Pastor(s)	1,200	1,200	1,200	
<b>TOTAL OTHER</b>	<b>7,208</b>	<b>4,359</b>	<b>3,943</b>	<b>(3,265)</b>
<b>Expense Totals:</b>	<b>800,000</b>	<b>782,924</b>	<b>800,000</b>	

# Annual Statistics 1956 - 1992

1956 - 2023

YEAR	BUDGET	% CHG	TOTAL RECEIPTS	% of BUDGET	CURRENT OPERATING	TOTAL ASSETS	DEBT	DEBT% of ASSETS	TOTAL BENEVOLENCE	% of CO-TB	SYNOD	% of CO-TB	MEMBERS		GROWTH RATE	AVERAGE CONTRIBUTION \$/ACM
													CONFIRMED	BAPTIZED		
56	\$ 6,185		\$ 6,185	100.0%	\$ 3,818	\$ 36,300	\$ 35,800	98.6%	\$ 730	16.1%	730	16.1%	79	175		\$ 78.29
57	10,404	68.2%	10,404	100.0%	4,833	47,300	45,038	95.2%	1,108	18.7%	1,108	18.7%	132	274	67.1%	78.82
58	15,002	44.2%	15,002	100.0%	6,179	47,300	41,021	86.7%	1,729	21.9%	1,729	21.9%	151	319	14.4%	99.35
59	21,824	45.5%	21,824	100.0%	6,367	119,500	105,792	88.5%	2,131	25.1%	2,131	25.1%	184	381	21.9%	118.61
60	20,344	-6.8%	20,344	100.0%	8,989	154,500	131,792	85.3%	2,345	20.7%	2,159	19.0%	227	455	23.4%	89.62
61	27,518	35.3%	22,987	83.5%	9,732	155,000	129,227	83.4%	2,994	23.5%	2,632	20.7%	249	500	9.7%	92.32
62	26,922	-2.2%	24,871	92.4%	12,300	134,200	84,000	62.6%	4,377	26.2%	3,722	22.3%	275	547	10.4%	90.44
Pastor Clinton resigned October 1, 1962; Pastor Berner was installed February 3, 1963.																
63	28,866	7.2%	32,475	112.5%	16,059	157,475	100,109	63.6%	2,450	13.2%	2,400	13.0%	272	525	-1.1%	119.39
64	35,400	22.6%	35,764	101.0%	15,344	189,200	99,080	52.4%	4,394	22.3%	4,000	20.3%	290	554	6.6%	123.32
65	37,050	4.7%	36,922	99.7%	15,160	190,061	89,251	47.0%	4,707	23.7%	4,607	23.2%	329	599	13.4%	112.22
66	40,018	8.0%	43,230	108.0%	18,111	193,075	85,619	44.3%	5,491	23.3%	5,468	23.2%	355	646	7.9%	121.77
67	47,072	17.6%	49,012	104.1%	24,564	221,550	74,012	33.4%	6,560	21.1%	6,460	20.8%	381	704	7.3%	128.64
68	47,927	1.8%	49,463	103.2%	23,388	221,550	74,012	33.4%	7,030	23.1%	6,930	22.8%	410	735	7.6%	120.64
69	56,877	18.7%	53,758	94.5%	22,480	221,550	56,040	25.3%	8,219	26.8%	8,119	26.4%	421	741	2.7%	127.69
70	63,956	12.4%	54,136	84.6%	29,929	221,550	42,751	19.3%	7,680	20.4%	7,380	19.6%	425	721	1.0%	127.38
71	56,100	-12.3%	54,872	97.8%	28,810	232,484	28,482	12.3%	6,000	17.2%	5,400	15.5%	450	741	5.9%	121.94
72	64,841	15.6%	63,589	98.1%	26,647	432,237	118,355	27.4%	5,325	16.7%	4,725	14.8%	481	758	6.9%	132.20
73	72,588	11.9%	63,560	87.6%	30,687	434,152	112,213	25.8%	9,750	24.1%	9,500	23.5%	488	765	1.5%	130.25
74	64,985	-10.5%	62,287	95.8%	37,655	432,156	109,423	25.3%	12,805	25.4%	10,915	21.6%	506	774	3.7%	123.10
Pastor Berner retired June 30, 1974; Pastor Rolander was installed August 4, 1974.																
75	70,650	8.7%	79,180	112.1%	44,778	436,500	106,416	24.4%	17,199	27.8%	11,874	19.2%	522	804	3.2%	151.69
76	86,870	23.0%	92,228	106.2%	50,951	437,258	103,175	23.6%	23,828	31.9%	14,000	18.7%	533	764	2.1%	173.04
77	98,700	13.6%	100,864	102.2%	63,976	442,604	99,683	22.5%	20,401	24.2%	14,500	17.2%	563	821	5.6%	179.15
78	160,160	62.3%	165,738	103.5%	85,933	620,177	221,045	35.6%	22,496	20.7%	15,000	13.8%	591	840	5.0%	280.44
79	169,635	5.9%	176,509	104.1%	97,281	624,585	217,749	34.9%	26,066	21.1%	16,550	13.4%	661	936	11.8%	267.03
80	173,780	2.4%	193,490	111.3%	104,149	633,048	213,298	33.7%	31,414	23.2%	18,000	13.3%	715	978	8.2%	270.62
81	211,915	21.9%	229,624	108.4%	149,286	651,593	208,430	32.0%	36,385	19.6%	22,300	12.0%	735	981	2.8%	312.41
82	237,800	12.2%	269,720	113.4%	170,122	682,901	203,104	29.7%	40,164	19.1%	24,000	11.4%	744	979	1.2%	362.53
83	282,118	18.6%	277,982	98.5%	175,044	723,774	197,279	27.3%	46,274	20.9%	25,500	11.5%	767	995	3.1%	362.43
Pastor Rolander retired June 30, 1983; Pastor McEachran was installed September 18, 1983.																
84	\$ 275,008	-2.5%	\$ 288,736	105.0%	\$ 154,848	\$ 795,033	\$ 190,908	24.0%	\$ 41,575	21.2%	\$ 25,500	13.0%	814	1,037	6.1%	\$ 354.71
85	246,443	-10.4%	310,544	126.0%	184,032	856,488	183,938	21.5%	51,777	22.0%	27,000	11.4%	878	1,065	7.9%	353.69
86	267,008	8.3%	327,347	122.6%	196,490	852,776	176,315	20.7%	57,085	22.5%	30,000	11.8%	854	1,008	-2.7%	383.31
87	300,098	12.4%	332,471	110.8%	200,685	874,191	167,978	19.2%	44,514	18.2%	30,000	12.2%	863	1,039	1.1%	385.25
88	302,514	0.8%	318,348	105.2%	197,665	941,989	158,857	16.9%	38,473	16.3%	25,000	10.6%	882	1,083	2.2%	360.94
89	318,338	5.2%	373,780	117.4%	225,150	970,018	148,956	15.4%	44,233	16.4%	25,000	9.3%	903	1,178	2.4%	413.93
90	344,153	8.1%	382,963	111.3%	253,148	965,121	137,969	14.3%	52,146	17.1%	25,000	8.2%	961	1,232	6.4%	398.50
91	370,088	7.5%	370,969	100.2%	307,876	979,204	126,279	12.9%	46,440	13.1%	19,600	5.5%	989	1,296	2.9%	375.10
92	376,244	1.7%	407,391	108.3%	313,488	1,095,511	112,980	10.3%	54,642	14.8%	26,000	7.1%	1,023	1,361	3.4%	398.23

# Annual Statistics 1993 - 2023

1956 - 2023

YEAR	BUDGET	% CHG	TOTAL RECEIPTS	% of BUDGET	CURRENT OPERATING	TOTAL ASSETS	DEBT	DEBT% of ASSETS	TOTAL BENEVOLENCE	% of CO+TB	SYNOD	% of CO+TB	MEMBERS		GROWTH RATE	AVERAGE CONTRIBUTION \$/ACM
													CONFIRMED	BAPTIZED		
93	389,465	3.5%	430,052	110.4%	322,359	1,136,138	98,700	8.7%	39,019	10.8%	14,000	3.9%	1,046	1,425	2.2%	411.14
94	395,153	1.5%	441,759	111.8%	337,870	1,132,896	88,081	7.3%	34,784	9.3%	11,550	3.1%	1,059	1,467	1.2%	417.15
95	467,225	18.2%	532,743	114.0%	381,065	1,161,445	65,997	5.7%	45,860	10.7%	21,600	5.1%	1,072	1,475	1.2%	496.96
96	499,644	6.9%	501,234	100.3%	401,191	1,152,187	47,310	4.1%	56,724	12.4%	24,600	5.4%	1,079	1,506	0.7%	464.54
97	534,068	6.9%	575,944	107.8%	393,380	1,348,236	26,870	2.0%	66,136	14.4%	26,000	5.7%	1,118	1,564	3.6%	515.16
98	535,804	0.3%	583,718	108.9%	451,778	1,505,381	0	0.0%	85,973	16.0%	27,000	5.0%	1,207	1,601	8.0%	483.61
99	628,431	17.3%	672,016	106.9%	478,358	4,617,044	1,304,011	28.2%	103,785	17.8%	29,700	5.1%	1,266	1,615	4.9%	530.82
00	708,208	12.7%	1,053,851	148.8%	497,584	4,726,153	1,386,918	29.3%	105,071	17.4%	29,700	4.9%	1,314	1,640	3.8%	802.02
01	781,982	10.4%	874,439	111.8%	544,647	4,525,576	1,131,264	25.0%	115,214	17.5%	29,700	4.5%	1,377	1,703	4.8%	635.03
02	850,593	8.8%	877,515	103.2%	594,435	4,516,505	1,093,925	24.2%	101,310	14.6%	29,000	4.2%	1,409	1,709	2.3%	622.79
03	852,257	0.2%	878,674	103.1%	595,664	4,541,650	1,044,458	23.0%	107,451	15.3%	29,000	4.1%	1,441	1,720	2.3%	609.77
04	884,975	3.8%	893,833	101.0%	655,309	4,506,332	984,794	21.9%	106,544	14.0%	29,000	3.8%	1,127	1,545	-21.8%	793.11
05	925,892	4.4%	980,378	106.1%	668,678	4,557,437	921,921	20.2%	132,466	16.5%	29,000	3.6%	1,152	1,576	2.2%	851.02
06	971,897	5.2%	1,149,196	118.2%	716,702	4,661,097	819,683	17.6%	139,734	16.3%	29,000	3.4%	1,159	1,602	0.6%	991.54
07	995,151	2.2%	1,148,235	115.6%	736,334	4,536,134	675,368	14.9%	116,391	13.6%	29,000	3.4%	1,168	1,601	0.8%	983.08
08	910,867	-8.3%	931,552	102.3%	670,793	4,555,496	606,381	13.3%	114,942	14.6%	29,000	3.7%	925	1,304	-20.8%	1,007.08
09	890,167	-2.3%	1,021,131	114.7%	634,300	4,515,702	539,506	11.9%	192,844	23.3%	29,000	3.5%	1,035	1,338	11.9%	986.60
10	921,224	3.5%	1,032,632	112.1%	690,835	4,560,548	469,034	10.3%	140,969	16.9%	29,000	3.5%	1,062	1,358	2.6%	972.35
11	900,030	-2.3%	1,264,693	140.5%	717,230	4,412,938	226,169	5.1%	128,952	15.2%	29,000	3.4%	1,094	1,383	3.0%	1,156.03
Associate Pastor Wesley Telyea was installed June 19, 2011 and resigned June 19, 2016																
12	914,100	1.6%	1,206,452	132.0%	759,199	4,564,564	38,471	0.8%	119,063	13.6%	29,000	3.3%	1,128	1,422	3.1%	1,069.55
13	911,175	-0.3%	1,133,970	124.5%	808,364	4,638,712	420	0.0%	129,931	13.8%	29,000	3.1%	1,133	1,432	0.4%	1,000.86
14	962,676	5.7%	1,104,534	114.7%	827,631	4,739,376		0.0%	130,884	13.7%	25,000	2.6%	1,149	1,454	1.4%	961.30
15	974,153	1.2%	1,122,648	115.2%	832,771	4,830,059		0.0%	111,955	11.9%	25,000	2.6%	1,151	1,445	0.2%	975.37
16	962,439	-1.2%	1,095,546	113.8%	799,322	4,847,091		0.0%	112,416	12.3%	25,000	2.7%	1,155	1,455	0.3%	948.52
17	905,000	-6.2%	964,330	106.8%	779,864	4,786,209		0.0%	162,381	17.2%	25,000	2.7%	1,026	1,283	-11.2%	939.89
18	890,800	-1.4%	1,046,836	117.5%	763,723	4,823,051		0.0%	196,091	20.4%	25,000	2.6%	1,026	1,285	0.0%	1,020.31
Pastor McEachran resigned January 7, 2019																
19	879,792	-1.2%	961,890	109.3%	722,203	4,638,633		0.0%	157,130	17.9%	25,000	2.8%	572	658	-44.2%	1,681.63
Pastor Lara Forbes was installed February 22, 2020																
20	895,182	1.7%	1,001,859	111.9%	700,280	4,671,145		0.0%	150,212	17.7%	25,000	2.9%	551	632	-3.7%	1,818.26
21	837,567	-6.4%	886,532	105.8%	701,540	4,649,009		0.0%	114,436	14.0%	25,000	3.1%	535	600	-2.9%	1,657.07
22	837,190	0.0%	913,321	109.1%	744,160	4,607,886		0.0%	85,544	10.3%	20,000	2.4%	525	590	-1.9%	1,739.66
23	800,000	-4.4%	925,923	115.7%	719,454	5,355,320		0.0%	101,037	12.3%	19,175	2.3%	519	582	-1.1%	1,784.05



